



# KR-Line Semi-Hermetic Compressor Units

## PRODUCT DATA & SPECIFICATIONS

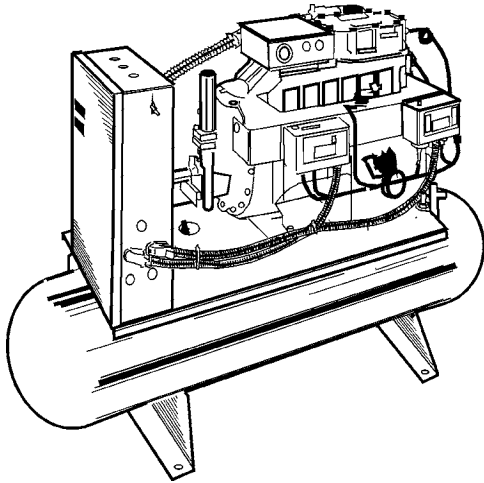
Bulletin K40-KRSB-PDS-1  
Part # 1111901

	<b>PRODUCT SUPPORT</b>	<i>scan:</i> 
	web: <a href="http://k-rp.com/kr">k-rp.com/kr</a>	
	email: <a href="mailto:rcu-wccu@k-rp.com">rcu-wccu@k-rp.com</a>	
	call: 1-844-893-3222 x523	

**Indoor Semi-Hermetic Compressor Unit  
for Remote Condenser**

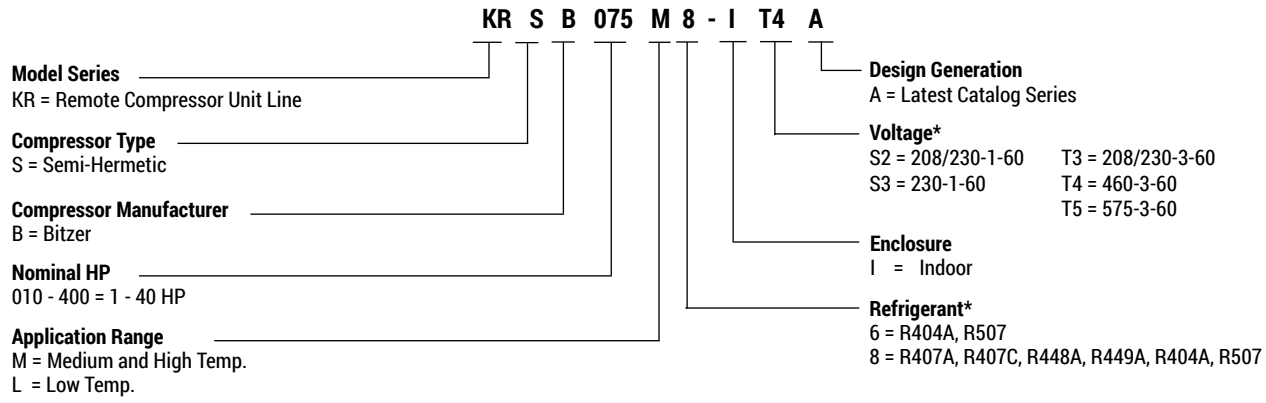
**Bitzer**

1 to 40 HP -  
High, Medium and Low Temperature Refrigeration



### CONTENTS

	Page
Nomenclature.....	2
Features & Options.....	2 - 3
Selection Data .....	4 - 17
Electrical Data.....	18 - 19
Dimensional Data.....	20 - 21
Specifications .....	22
Wiring Diagrams.....	23 - 25
Project Information.....	26
Product Support Resources: Service Parts, Troubleshooting, Warranty, etc.....	BACK



\* subject to compressor availability




**STANDARD FEATURES**

- Compatible with Low GWP Refrigerants
- Spring mounted compressor with discharge and suction vibration eliminator
- Electronic liquid injection on L8 units
- Copper tubing secured with Hydra-Zorb / Cush-A-Clamp
- Receiver with fusible plug or pressure relief valve and liquid shut off valve
- Flex hose on all controls
- Adjustable dual high / low pressure control
- Suction and discharge service valves
- Unit leak tested and shipped with helium holding charge
- Hinged access panel electrical control box with compressor contactor and fused control circuit




**AVAILABLE OPTIONS**

- Suction accumulator with or without heat exchanger
- Sealed or replaceable core suction filter
- Oil separator c/w oil return solenoid valve
- Oversized receiver
- Receiver inlet valve
- Sealed or replaceable core liquid line filter drier
- Liquid line solenoid valve w/ 115 and 230 volt coils (shipped loose)
- Ball valve (shipped loose)
- Two valve adjustable flooded head pressure control
- Compressor circuit breaker
- Compressor time delay relay
- Pump down toggle switch
- Time clock - factory mounted and wired or shipped loose
- Defrost contactor with fuse block
- Evaporator fan contactor with fuse block
- Fused disconnect
- Phase / voltage monitor
- Compressor crankcase heater
- Compressor unloading
- Insulated suction lines
- Crankcase pressure regulating valve
- Additional options available, please consult factory

**Medium / High Temperature Models KRSB 010M through 075M**  
**Low Temperature Models KRSB 010L through 075L**

For models <b>KRSAB10M8-075M8</b> or <b>KRSB005L6/8-075L6/8</b>	
<b>GOOD</b> 	<b>Package B:</b> + <i>Sealed</i> Liquid Line Filter Drier & Sight Glass
<b>BETTER</b> 	<b>Package N:</b> + <i>Sealed</i> Liquid Line Filter Drier & Sight Glass + Suction Accumulator w/o Heat Exchanger
<b>BEST</b> 	<b>Package P:</b> + <i>Sealed</i> Liquid Line Filter Drier & Sight Glass + Suction Accumulator w/o Heat Exchanger + <i>Sealed</i> Suction Filter + Non-Fused Disconnect

**Medium / High Temperature Models KRSB 076M through 400M**  
**Low Temperature Models KRSB 090L through 400L**

For models <b>KRSB076M8-400M8</b> or <b>KRSB090L6/8-400L6/8</b>	
<b>GOOD</b> 	<b>Package B:</b> + <i>Replaceable</i> Liquid Line Filter Drier & Sight Glass
<b>BETTER</b> 	<b>Package N:</b> + <i>Replaceable</i> Liquid Line Filter Drier & Sight Glass + Suction Accumulator w/o Heat Exchanger
<b>BEST</b> 	<b>Package P:</b> + <i>Replaceable</i> Liquid Line Filter Drier & Sight Glass + Suction Accumulator w/o Heat Exchanger + <i>Replaceable</i> Suction Filter + Non-Fused Disconnect

**For information on Evaporator Defrost Kits and Fuse Packages, visit [www.k-rp.com/dfk](http://www.k-rp.com/dfk)**

**R404A Medium/High Temperature "M8" SEMI-HERMETIC Models**

Model KRSB	Suction Temp.		Selection Capacity BTU/h			Condensation Temperature		
			100	105	110	115	120	125
	°F	(°C)	-37.8	-40.6	-43.3	-46.1	-48.9	-51.7
KRSB010M8 Compressor Model 2KES-05	45	-7	17100	16200	15300	14400	13500	12700
	40	-4	15500	14600	13800	13000	12200	11400
	35	-2	13900	13200	12400	11700	10900	10200
	30	(-1.1)	12500	11800	11100	10500	9800	9200
	25	(-3.9)	11200	10600	9900	9300	8700	8200
	20	(-6.7)	10000	9400	8800	8300	7800	7200
	15	(-9.4)	8900	8400	7800	7300	6900	6400
	10	(-12.2)	7800	7400	6900	6500	6000	5600
	5	(-15)	6900	6500	6100	5700	5300	4900
0	(-17.8)	6020	5640	5270	4910	4560	4230	
KRSB015M8 Compressor Model 2JES-07	45	-7	22800	21700	20600	19500	18500	17400
	40	-4	20700	19700	18700	17700	16700	15700
	35	-2	18700	17800	16800	15900	15000	14100
	30	(-1.1)	16900	16000	15100	14300	13500	12700
	25	(-3.9)	15200	14400	13600	12800	12100	11300
	20	(-6.7)	13600	12800	12100	11400	10700	10100
	15	(-9.4)	12100	11400	10800	10200	9500	8900
	10	(-12.2)	10700	10100	9600	9000	8400	7900
	5	(-15)	9500	9000	8400	7900	7400	6900
0	(-17.8)	8340	7860	7390	6920	6470	6020	
KRSB020M8 Compressor Model 2HES-2	45	-7	29100	27800	26400	25000	23700	22300
	40	-4	26500	25200	23900	22700	21400	20200
	35	-2	23900	22800	21600	20400	19300	18200
	30	(-1.1)	21600	20500	19500	18400	17400	16300
	25	(-3.9)	19400	18500	17500	16500	15600	14600
	20	(-6.7)	17400	16500	15600	14800	13900	13000
	15	(-9.4)	15600	14700	13900	13100	12400	11600
	10	(-12.2)	13800	13100	12400	11700	10900	10200
	5	(-15)	12300	11600	10900	10300	9600	9000
0	(-17.8)	10800	10200	9610	9030	8450	7890	
KRSB025M8 Compressor Model 2GES-2	45	-7	33200	31600	30100	28500	27000	25500
	40	-4	30200	28700	27300	25900	24500	23100
	35	-2	27300	26000	24700	23400	22100	20800
	30	(-1.1)	24700	23500	22300	21100	19900	18700
	25	(-3.9)	22300	21100	20000	19000	17900	16800
	20	(-6.7)	20000	19000	18000	17000	16000	15100
	15	(-9.4)	17900	17000	16100	15200	14300	13400
	10	(-12.2)	16000	15100	14300	13500	12700	11900
	5	(-15)	14200	13400	12700	12000	11300	10600
0	(-17.8)	12500	11900	11200	10600	9920	9290	
KRSB029M8 Compressor Model 2FES-3	45	-7	41300	39200	37100	35100	33000	31000
	40	-4	37500	35600	33700	31800	29900	28100
	35	-2	34000	32200	30500	28700	27000	25300
	30	(-1.1)	30700	29100	27500	25900	24300	22800
	25	(-3.9)	27600	26200	24700	23300	21900	20500
	20	(-6.7)	24800	23500	22100	20900	19600	18300
	15	(-9.4)	22200	21000	19800	18600	17500	16300
	10	(-12.2)	19800	18700	17600	16600	15500	14500
	5	(-15)	17500	16600	15600	14700	13800	12800
0	(-17.8)	15500	14600	13800	12900	12100	11300	
KRSB030M8 Compressor Model 2EES-3	45	-7	53100	50600	48100	45600	43100	40500
	40	-4	48200	46000	43700	41300	39000	36600
	35	-2	43700	41600	39500	37400	35200	33000
	30	(-1.1)	39500	37600	35700	33700	31700	29700
	25	(-3.9)	35600	33800	32100	30300	28500	26600
	20	(-6.7)	32000	30400	28800	27100	25500	23800
	15	(-9.4)	28600	27200	25700	24200	22700	21200
	10	(-12.2)	25500	24200	22900	21600	20200	18800
	5	(-15)	22700	21500	20300	19100	17900	16600
0	(-17.8)	20100	19000	17900	16800	15700	14600	

Model KRSB	Suction Temp.		Selection Capacity BTU/h			Condensation Temperature		
			100	105	110	115	120	125
	°F	(°C)	-37.8	-40.6	-43.3	-46.1	-48.9	-51.7
KRSB035M8 Compressor Model 2DES-3	45	-7	63100	60300	57300	54400	51400	48300
	40	-4	57400	54700	52000	49300	46600	43800
	35	-2	52100	49600	47100	44600	42100	39500
	30	(-1.1)	47100	44800	42600	40300	37900	35600
	25	(-3.9)	42500	40400	38300	36200	34100	32000
	20	(-6.7)	38200	36300	34400	32500	30600	28600
	15	(-9.4)	34200	32500	30800	29100	27300	25500
	10	(-12.2)	30600	29000	27500	25900	24300	22700
	5	(-15)	27200	25800	24400	23000	21600	20100
0	(-17.8)	24100	22900	21600	20300	19000	17700	
KRSB040M8 Compressor Model 2CES-4	45	-7	77200	73800	70300	66700	63100	59400
	40	-4	70300	67100	63900	60600	57300	53900
	35	-2	63800	60900	57900	54900	51800	48700
	30	(-1.1)	57800	55100	52400	49600	46800	44000
	25	(-3.9)	52200	49700	47300	44700	42200	39600
	20	(-6.7)	47000	44800	42500	40200	37900	35500
	15	(-9.4)	42200	40200	38100	36000	33900	31800
	10	(-12.2)	37800	35900	34100	32200	30300	28400
	5	(-15)	33700	32000	30400	28700	26900	25200
0	(-17.8)	29900	28400	26900	25400	23900	22300	
KRSB050M8 Compressor Model 4FES-5	45	-7	85600	81600	77500	73400	69200	65000
	40	-4	77600	73900	70200	66400	62600	58700
	35	-2	70200	66800	63400	60000	56500	53000
	30	(-1.1)	63200	60200	57100	54000	50800	47600
	25	(-3.9)	56900	54100	51300	48500	45700	42800
	20	(-6.7)	51000	48500	46000	43500	40900	38300
	15	(-9.4)	45600	43400	41200	38900	36600	34200
	10	(-12.2)	40700	38700	36700	34600	32600	30500
	5	(-15)	36100	34400	32600	30800	28900	27100
0	(-17.8)	32000	30500	28900	27300	25600	24000	
KRSB060M8 Compressor Model 4EES-6	45	-7	107700	102700	97700	92700	87600	82500
	40	-4	97600	93000	88400	83800	79200	74500
	35	-2	88200	84000	79800	75600	71400	67100
	30	(-1.1)	79500	75700	71900	68000	64200	60200
	25	(-3.9)	71400	68000	64500	61100	57500	54000
	20	(-6.7)	64000	60900	57800	54600	51500	48200
	15	(-9.4)	57200	54400	51600	48800	45900	43000
	10	(-12.2)	50900	48400	45900	43400	40800	38200
	5	(-15)	45200	43000	40700	38500	36200	33800
0	(-17.8)	40000	38000	36000	34000	31900	29900	
KRSB076M8 Compressor Model 4DES-7	45	-7	128800	123200	117500	111800	106000	100200
	40	-4	116800	111600	106400	101200	95900	90500
	35	-2	105700	100900	96200	91400	86500	81600
	30	(-1.1)	95400	91000	86700	82300	77900	73400
	25	(-3.9)	85800	81900	77900	73900	69900	65800
	20	(-6.7)	77000	73500	69900	66200	62600	58900
	15	(-9.4)	68900	65700	62400	59200	55900	52500
	10	(-12.2)	61500	58600	55700	52700	49700	46700
	5	(-15)	54700	52100	49400	46800	44100	41500
0	(-17.8)	48400	46100	43800	41400	39000	36600	
KRSB090M8 Compressor Model 4CES-9	45	-7	156100	149500	142900	136300	129600	122900
	40	-4	141600	135500	129400	123200	117100	110900
	35	-2	128000	122400	116800	111200	105500	99800
	30	(-1.1)	115500	110300	105200	100000	94800	89600
	25	(-3.9)	103900	99200	94500	89800	85000	80300
	20	(-6.7)	93200	88900	84600	80300	76000	71700
	15	(-9.4)	83300	79400	75500	71600	67700	63800
	10	(-12.2)	74300	70700	67200	63700	60200	56600
	5	(-15)	66000	62800	59600	56400	53300	50100
0	(-17.8)	58400	55500	52700	49800	47000	44100	

Application Data calculated at 65°F Return Gas, 6°F Liquid Subcooling  
Shaded Area Restriction: 20°F Max Superheat

**R404A Medium/High Temperature "M8" SEMI-HERMETIC Models (cont'd)**

Model KRSB	Suction Temp.		Selection Capacity BTU/h			Condensation Temperature		
			100	105	110	115	120	125
	°F	(°C)	-37.8	-40.6	-43.3	-46.1	-48.9	-51.7
<b>KRSB100M8 Compressor Model 4VES-10</b>	45	-7	167100	159400	151800	144200	136600	129000
	40	-4	151000	144000	136900	129900	122900	115900
	35	-2	136100	129600	123200	116700	110300	103900
	30	(-1.1)	122300	116400	110500	104600	98700	92900
	25	(-3.9)	109600	104200	98800	93400	88100	82700
	20	(-6.7)	97800	92900	88000	83100	78300	73400
	15	(-9.4)	87000	82600	78100	73700	69300	65000
	10	(-12.2)	77100	73100	69100	65100	61200	57200
	5	(-15)	68100	64500	60900	57300	53700	50200
	0	(-17.8)	59800	56600	53400	50200	47000	43800
<b>KRSB120M8 Compressor Model 4TES-12</b>	45	-7	200800	191700	182700	173700	164700	155700
	40	-4	181600	173300	165000	156700	148400	140200
	35	-2	163900	156200	148600	141000	133400	125800
	30	(-1.1)	147400	140400	133500	126500	119600	112600
	25	(-3.9)	132200	125900	119500	113200	106800	100500
	20	(-6.7)	118200	112400	106700	100900	95200	89500
	15	(-9.4)	105400	100100	94900	89700	84500	79300
	10	(-12.2)	93600	88800	84100	79400	74800	70100
	5	(-15)	82800	78500	74300	70100	65900	61700
	0	(-17.8)	72900	69100	65300	61600	57800	54100
<b>KRSB150M8 Compressor Model 4PES-15</b>	45	-7	232200	221400	210700	200000	189400	178700
	40	-4	209700	199800	189900	180100	170300	160500
	35	-2	188800	179700	170700	161600	152600	143600
	30	(-1.1)	169500	161200	152900	144600	136400	128100
	25	(-3.9)	151700	144100	136500	129000	121400	114000
	20	(-6.7)	135300	128300	121500	114600	107800	101000
	15	(-9.4)	120200	113900	107700	101500	95300	89100
	10	(-12.2)	106400	100700	95100	89500	83900	78400
	5	(-15)	93700	88600	83600	78500	73500	68600
	0	(-17.8)	82200	77700	73100	68600	64200	59700
<b>KRSB200M8 Compressor Model 4NES-20</b>	45	-7	273800	261500	249300	237000	224800	212500
	40	-4	247700	236400	225100	213800	202600	191300
	35	-2	223500	213100	202700	192400	182000	171700
	30	(-1.1)	201000	191500	182100	172600	163200	153700
	25	(-3.9)	180300	171700	163000	154400	145800	137200
	20	(-6.7)	161200	153400	145500	137700	129900	122100
	15	(-9.4)	143700	136600	129500	122400	115300	108300
	10	(-12.2)	127600	121200	114800	108400	102100	95700
	5	(-15)	112900	107200	101400	95700	90000	84300
	0	(-17.8)	99500	94400	89200	84100	79000	74000
<b>KRSB250M8 Compressor Model 4HE-25</b>	45	-7	352300	337000	321600	306000	290400	274700
	40	-4	320000	305900	291700	277400	263000	248500
	35	-2	290000	277000	263900	250800	237500	224200
	30	(-1.1)	262100	250200	238200	226100	214000	201800
	25	(-3.9)	236200	225300	214400	203400	192300	181100
	20	(-6.7)	212300	202400	192400	182400	172200	162100
	15	(-9.4)	190200	181200	172100	163000	153800	144600
	10	(-12.2)	169800	161700	153500	145200	136900	128600
	5	(-15)	151100	143700	136300	128900	121400	113900
	0	(-17.8)	133900	127300	120600	114000	107200	100500
<b>KRSB300M8 Compressor Model 4GE-30</b>	45	-7	403700	386000	368100	350000	331800	313400
	40	-4	366900	350500	334000	317400	300600	283700
	35	-2	332600	317600	302400	287100	271700	256200
	30	(-1.1)	300700	287000	273100	259100	245000	230700
	25	(-3.9)	271200	258600	245900	233200	220300	207300
	20	(-6.7)	243800	232400	220900	209300	197600	185800
	15	(-9.4)	218600	208200	197800	187300	176700	166000
	10	(-12.2)	195300	186000	176500	167000	157500	147800
	5	(-15)	173900	165500	157000	148500	139900	131200
	0	(-17.8)	154300	146800	139200	131500	123800	116100

Model KRSB	Suction Temp.		Selection Capacity BTU/h			Condensation Temperature		
			100	105	110	115	120	125
	°F	(°C)	-37.8	-40.6	-43.3	-46.1	-48.9	-51.7
<b>KRSB350M8 Compressor Model 6HE-35</b>	45	-7	516700	494300	471900	449300	426700	403900
	40	-4	469400	448800	428100	407300	386400	365500
	35	-2	425400	406500	387400	368300	349100	329800
	30	(-1.1)	384500	367200	349700	332200	314600	296900
	25	(-3.9)	346600	330800	314800	298800	282700	266600
	20	(-6.7)	311500	297100	282600	268000	253300	238600
	15	(-9.4)	279100	266000	252800	239600	226300	212900
	10	(-12.2)	249300	237400	225500	213500	201400	189300
	5	(-15)	221800	211100	200400	189500	178700	167700
	0	(-17.8)	196600	187000	177300	167600	157800	148000
<b>KRSB400M8 Compressor Model 6GE-40</b>	45	-7	585200	559000	532600	506200	479700	453100
	40	-4	532200	508000	483800	459600	435200	410700
	35	-2	482700	460600	438500	416200	393900	371400
	30	(-1.1)	436800	416600	396300	376000	355600	335100
	25	(-3.9)	394100	375800	357300	338800	320200	301500
	20	(-6.7)	354700	338000	321300	304500	287600	270600
	15	(-9.4)	318200	303100	288000	272800	257600	242200
	10	(-12.2)	284600	271000	257400	243700	229900	216000
	5	(-15)	253600	241500	229200	216900	204600	192100
	0	(-17.8)	225200	214300	203400	192400	181300	170100

Application Data calculated at 65°F Return Gas, 6°F Liquid Subcooling  
Shaded Area Restriction: 20°F Max Superheat

**R448A** Medium/High Temperature "M8" (MEAN) SEMI-HERMETIC Models

Model KRSB	Suction Temp.		Selection Capacity BTU/h			Condensation Temperature		
			100	105	110	115	120	125
	°F	(°C)	-37.8	-40.6	-43.3	-46.1	-48.9	-51.7
KRSB010M8 Compressor Model 2KES-05	45	-7	18200	17300	16500	15600	14700	13800
	40	-4	16300	15500	14700	13900	13100	12300
	35	-2	14600	13800	13100	12300	11600	10900
	30	(-1.1)	12900	12300	11600	10900	10200	9600
	25	(-3.9)	11500	10800	10200	9600	9000	8400
	20	(-6.7)	10100	9500	9000	8400	7900	7300
	15	(-9.4)	8900	8400	7900	7400	6900	6400
	10	(-12.2)	7700	7300	6800	6400	5900	5500
	0	(-17.8)	5760	5400	5040	4680	4320	3970
KRSB015M8 Compressor Model 2JES-07	45	-7	23900	22800	21700	20600	19500	18400
	40	-4	21500	20400	19400	18400	17400	16400
	35	-2	19200	18300	17300	16400	15500	14500
	30	(-1.1)	17100	16300	15400	14600	13700	12900
	25	(-3.9)	15200	14400	13600	12900	12100	11300
	20	(-6.7)	13400	12700	12000	11300	10600	10000
	15	(-9.4)	11800	11200	10600	9900	9300	8700
	10	(-12.2)	10400	9800	9200	8700	8100	7500
	0	(-17.8)	7820	7370	6920	6470	6020	5570
KRSB020M8 Compressor Model 2HES-2	45	-7	30200	28800	27500	26100	24700	23400
	40	-4	27100	25900	24600	23400	22100	20900
	35	-2	24300	23200	22000	20900	19700	18600
	30	(-1.1)	21700	20700	19600	18600	17500	16500
	25	(-3.9)	19300	18400	17400	16500	15500	14600
	20	(-6.7)	17100	16200	15400	14500	13700	12800
	15	(-9.4)	15100	14300	13500	12800	12000	11200
	10	(-12.2)	13300	12600	11900	11200	10500	9800
	0	(-17.8)	10100	9520	8970	8410	7840	7280
KRSB025M8 Compressor Model 2GES-2	45	-7	35400	33800	32200	30600	29100	27500
	40	-4	31800	30300	28900	27500	26000	24600
	35	-2	28500	27200	25900	24500	23200	21900
	30	(-1.1)	25500	24300	23100	21800	20600	19400
	25	(-3.9)	22700	21600	20500	19400	18300	17200
	20	(-6.7)	20100	19100	18100	17100	16100	15200
	15	(-9.4)	17800	16900	16000	15100	14200	13300
	10	(-12.2)	15600	14800	14000	13200	12400	11600
	0	(-17.8)	11900	11300	10600	9980	9330	8680
KRSB029M8 Compressor Model 2FES-3	45	-7	44600	42600	40700	38700	36700	34700
	40	-4	40100	38300	36500	34700	32900	31100
	35	-2	36000	34300	32700	31000	29300	27700
	30	(-1.1)	32100	30600	29100	27600	26100	24600
	25	(-3.9)	28600	27300	25900	24500	23100	21800
	20	(-6.7)	25400	24200	22900	21700	20400	19200
	15	(-9.4)	22500	21300	20200	19100	18000	16800
	10	(-12.2)	19800	18800	17800	16700	15700	14700
	0	(-17.8)	15100	14300	13500	12700	11800	11000
KRSB030M8 Compressor Model 2EES-3	45	-7	55100	52900	50800	48600	46500	44400
	40	-4	49600	47600	45600	43600	41700	39700
	35	-2	44500	42700	40900	39000	37200	35400
	30	(-1.1)	39800	38200	36500	34800	33200	31500
	25	(-3.9)	35500	34000	32500	30900	29400	27900
	20	(-6.7)	31600	30200	28800	27400	26000	24600
	15	(-9.4)	28000	26700	25400	24200	22900	21600
	10	(-12.2)	24700	23500	22400	21200	20100	18900
	0	(-17.8)	18900	18000	17000	16100	15200	14200

Model KRSB	Suction Temp.		Selection Capacity BTU/h			Condensation Temperature		
			100	105	110	115	120	125
	°F	(°C)	-37.8	-40.6	-43.3	-46.1	-48.9	-51.7
KRSB035M8 Compressor Model 2DES-3	45	-7	65600	63000	60500	58000	55500	53000
	40	-4	59000	56700	54400	52100	49800	47500
	35	-2	53000	50900	48800	46600	44500	42400
	30	(-1.1)	47500	45500	43600	41600	39700	37700
	25	(-3.9)	42400	40600	38800	37000	35200	33400
	20	(-6.7)	37700	36100	34400	32800	31200	29500
	15	(-9.4)	33400	31900	30400	29000	27500	26000
	10	(-12.2)	29500	28200	26800	25500	24100	22800
	0	(-17.8)	22700	21600	20500	19400	18300	17300
KRSB040M8 Compressor Model 2CES-4	45	-7	80200	77200	74200	71200	68100	65100
	40	-4	72300	69500	66700	64000	61200	58400
	35	-2	65000	62500	59900	57300	54800	52200
	30	(-1.1)	58300	55900	53600	51200	48900	46500
	25	(-3.9)	52100	49900	47800	45600	43500	41400
	20	(-6.7)	46400	44400	42500	40500	38600	36600
	15	(-9.4)	41200	39400	37600	35900	34100	32300
	10	(-12.2)	36400	34800	33200	31600	30000	28400
	0	(-17.8)	28200	26900	25600	24300	23000	21700
KRSB050M8 Compressor Model 4FES-5	45	-7	88900	85500	82100	78600	75200	71900
	40	-4	80000	76900	73700	70600	67500	64300
	35	-2	71900	69000	66100	63200	60300	57400
	30	(-1.1)	64300	61700	59000	56400	53700	51100
	25	(-3.9)	57400	55000	52600	50100	47700	45300
	20	(-6.7)	51100	48900	46700	44500	42300	40100
	15	(-9.4)	45300	43300	41300	39300	37300	35300
	10	(-12.2)	40000	38200	36400	34600	32800	31000
	0	(-17.8)	30900	29400	27900	26400	25000	23500
KRSB060M8 Compressor Model 4EES-6	45	-7	111700	107400	103100	98800	94500	90200
	40	-4	100500	96600	92600	88600	84700	80700
	35	-2	90300	86600	82900	79300	75700	72000
	30	(-1.1)	80800	77400	74100	70700	67400	64100
	25	(-3.9)	72100	69000	65900	62900	59800	56800
	20	(-6.7)	64100	61300	58500	55700	52900	50200
	15	(-9.4)	56800	54300	51700	49200	46700	44200
	10	(-12.2)	50200	47900	45600	43300	41000	38700
	0	(-17.8)	38600	36800	34900	33000	31200	29400
KRSB076M8 Compressor Model 4DES-7	45	-7	131700	126600	121500	116400	111400	106300
	40	-4	118500	113800	109100	104400	99800	95100
	35	-2	106400	102000	97700	93400	89100	84800
	30	(-1.1)	95200	91200	87200	83300	79300	75400
	25	(-3.9)	84900	81200	77600	74000	70400	66800
	20	(-6.7)	75400	72100	68800	65500	62200	59000
	15	(-9.4)	66800	63800	60800	57800	54800	51900
	10	(-12.2)	59000	56200	53500	50800	48100	45400
	0	(-17.8)	45400	43100	40900	38700	36600	34400
KRSB090M8 Compressor Model 4CES-9	45	-7	161000	154900	148800	142700	136600	130600
	40	-4	145100	139400	133800	128200	122600	117000
	35	-2	130300	125100	120000	114800	109600	104500
	30	(-1.1)	116700	112000	107200	102500	97800	93100
	25	(-3.9)	104300	99900	95600	91200	86900	82700
	20	(-6.7)	92800	88900	84900	81000	77100	73200
	15	(-9.4)	82400	78800	75200	71600	68100	64500
	10	(-12.2)	72800	69600	66300	63100	59900	56700
	0	(-17.8)	56300	53700	51100	48500	45900	43300

Above ratings are based on mean temperature. To convert to dew point ratings, use 0.95 multiplier.

Application Data calculated at 65°F Return Gas, 6°F Liquid Subcooling

Shaded Area Restriction: 20°F Max Superheat

**R448A** Medium/High Temperature "M8" (MEAN) SEMI-HERMETIC Models (cont'd)

Model KRSB	Suction Temp.		Selection Capacity BTU/h			Condensation Temperature		
			100	105	110	115	120	125
	°F	(°C)	-37.8	-40.6	-43.3	-46.1	-48.9	-51.7
KRSB100M8 Compressor Model 4VES-10	45	-7	171800	164700	157600	150600	143600	136600
	40	-4	154200	147700	141200	134700	128300	121900
	35	-2	138000	132000	126000	120100	114200	108400
	30	(-1.1)	123100	117600	112200	106700	101400	96000
	25	(-3.9)	109400	104400	99500	94500	89600	84800
	20	(-6.7)	96900	92400	87900	83400	79000	74600
	15	(-9.4)	85500	81400	77400	73300	69300	65300
	10	(-12.2)	75200	71500	67800	64100	60500	56900
	0	(-17.8)	65800	62500	59100	55900	52600	49400
KRSB120M8 Compressor Model 4TES-12	45	-7	206600	198200	189900	181600	173300	165100
	40	-4	185600	177900	170200	162600	155000	147500
	35	-2	166300	159200	152200	145200	138300	131400
	30	(-1.1)	148500	142000	135600	129300	122900	116600
	25	(-3.9)	132200	126300	120500	114700	108900	103200
	20	(-6.7)	117300	112000	106700	101400	96200	91000
	15	(-9.4)	103700	98900	94100	89400	84600	80000
	10	(-12.2)	91300	87000	82700	78400	74200	70000
	0	(-17.8)	80100	76200	72400	68500	64700	61000
KRSB150M8 Compressor Model 4PES-15	45	-7	238700	228700	218700	208800	198900	189100
	40	-4	214100	204800	195700	186500	177500	168400
	35	-2	191300	182900	174500	166100	157800	149500
	30	(-1.1)	170500	162700	155000	147400	139800	132200
	25	(-3.9)	151300	144300	137300	130300	123400	116500
	20	(-6.7)	133900	127500	121100	114800	108500	102300
	15	(-9.4)	117900	112100	106400	100700	95000	89400
	10	(-12.2)	103500	98200	93000	87900	82800	77700
	0	(-17.8)	90400	85700	81000	76400	71800	67200
KRSB200M8 Compressor Model 4NES-20	45	-7	281800	270400	259000	247700	236500	225300
	40	-4	253100	242700	232200	221900	211500	201300
	35	-2	226700	217100	207600	198100	188700	179300
	30	(-1.1)	202500	193700	185000	176400	167700	159200
	25	(-3.9)	180300	172300	164400	156500	148700	140900
	20	(-6.7)	159900	152700	145500	138400	131300	124300
	15	(-9.4)	141400	134900	128400	122000	115600	109200
	10	(-12.2)	124600	118700	112900	107100	101300	95600
	0	(-17.8)	109300	104100	98800	93600	88500	83300
KRSB250M8 Compressor Model 4HE-25	45	-7	362400	348300	334000	319800	305500	291200
	40	-4	327100	314000	301000	287900	274700	261500
	35	-2	294400	282400	270400	258400	246300	234200
	30	(-1.1)	264200	253300	242300	231300	220200	209200
	25	(-3.9)	236400	226500	216500	206400	196300	186200
	20	(-6.7)	210900	201900	192800	183600	174500	165300
	15	(-9.4)	187600	179300	171100	162800	154500	146200
	10	(-12.2)	166200	158800	151300	143800	136300	128800
	0	(-17.8)	146700	140000	133300	126500	119700	112900
KRSB300M8 Compressor Model 4GE-30	45	-7	415100	398600	382000	365300	348600	331800
	40	-4	374700	359600	344300	329000	313600	298200
	35	-2	337400	323600	309600	295600	281500	267300
	30	(-1.1)	303000	290300	277600	264800	251900	239000
	25	(-3.9)	271300	259800	248200	236500	224800	213000
	20	(-6.7)	242200	231800	221300	210700	200000	189400
	15	(-9.4)	215600	206100	196600	187000	177400	167800
	10	(-12.2)	191200	182700	174100	165500	156800	148100
	0	(-17.8)	169000	161300	153600	145900	138100	130300

Model KRSB	Suction Temp.		Selection Capacity BTU/h			Condensation Temperature		
			100	105	110	115	120	125
	°F	(°C)	-37.8	-40.6	-43.3	-46.1	-48.9	-51.7
KRSB350M8 Compressor Model 6HE-35	45	-7	531700	511100	490500	469900	449300	428600
	40	-4	479900	461000	442000	423100	404100	385100
	35	-2	432000	414600	397300	379900	362400	345000
	30	(-1.1)	387800	371900	356000	340100	324100	308200
	25	(-3.9)	347100	332600	318100	303600	289000	274400
	20	(-6.7)	309700	296600	283400	270100	256900	243600
	15	(-9.4)	275500	263500	251600	239500	227500	215400
	10	(-12.2)	244200	233300	222500	211600	200700	189700
	0	(-17.8)	215600	205800	196000	186200	176300	166400
KRSB400M8 Compressor Model 6GE-40	45	-7	601500	577200	553000	528800	504600	480300
	40	-4	543500	521300	499100	477000	454700	432500
	35	-2	489900	469600	449300	429100	408700	388400
	30	(-1.1)	440400	421900	403500	385000	366400	347800
	25	(-3.9)	394700	378000	361200	344400	327600	310600
	20	(-6.7)	352800	337700	322500	307300	292000	276600
	15	(-9.4)	314400	300700	287000	273200	259400	245500
	10	(-12.2)	279200	266900	254500	242100	229600	217000
	0	(-17.8)	247000	236000	224900	213700	202500	191100

Above ratings are based on mean temperature. To convert to dew point ratings, use 0.95 multiplier.

Application Data calculated at 65°F Return Gas, 6°F Liquid Subcooling

Shaded Area Restriction: 20°F Max Superheat

**R407A** Medium/High Temperature "M8" (MEAN) SEMI-HERMETIC Models

Model KRSB	Suction Temp.		Selection Capacity BTU/h			Condensation Temperature			Model KRSB	Suction Temp.		Selection Capacity BTU/h			Condensation Temperature		
			100	105	110	115	120	125				100	105	110	115	120	125
	°F	(°C)	-37.8	-40.6	-43.3	-46.1	-48.9	-51.7		°F	(°C)	-37.8	-40.6	-43.3	-46.1	-48.9	-51.7
KRSB010M8 Compressor Model 2KES-05	45	-7	18900	18200	17400	16600	15900	15100	KRSB035M8 Compressor Model 2DES-3	45	-7	64200	61700	59200	56700	54200	51800
	40	-4	17000	16300	15600	14900	14200	13500		40	-4	57700	55400	53100	50800	48600	46300
	35	-2	15200	14500	13900	13200	12600	12000		35	-2	51800	49700	47500	45400	43300	41200
	30	(-1.1)	13500	12900	12400	11800	11200	10600		30	(-1.1)	46300	44300	42400	40500	38500	36600
	25	(-3.9)	12000	11500	10900	10400	9800	9300		25	(-3.9)	41200	39500	37700	35900	34200	32400
	20	(-6.7)	10600	10100	9600	9100	8600	8100		20	(-6.7)	36600	35000	33400	31800	30200	28600
	15	(-9.4)	9400	8900	8500	8000	7500	7100		15	(-9.4)	32400	30900	29400	28000	26500	25100
	10	(-12.2)	8200	7800	7400	7000	6600	6100		10	(-12.2)	28500	27200	25900	24500	23200	21900
	5	(-15)	7200	6800	6400	6000	5700	5300		5	(-15)	25000	23800	22600	21400	20200	19000
0	(-17.8)	6200	5860	5520	5180	4840	4500	0	(-17.8)	21800	20800	19700	18600	17500	16500		
KRSB015M8 Compressor Model 2JES-07	45	-7	24800	23800	22900	21900	21000	20000	KRSB040M8 Compressor Model 2CES-4	45	-7	78500	75500	72500	69500	66600	63600
	40	-4	22300	21400	20500	19700	18800	17900		40	-4	70700	67900	65200	62400	59700	57000
	35	-2	20000	19200	18400	17600	16800	15900		35	-2	63500	60900	58400	55900	53400	50800
	30	(-1.1)	17900	17100	16400	15600	14900	14200		30	(-1.1)	56800	54500	52200	49800	47500	45200
	25	(-3.9)	15900	15300	14600	13900	13200	12500		25	(-3.9)	50700	48600	46400	44300	42200	40100
	20	(-6.7)	14100	13500	12900	12300	11600	11000		20	(-6.7)	45100	43200	41200	39300	37400	35500
	15	(-9.4)	12500	11900	11400	10800	10200	9700		15	(-9.4)	40000	38200	36400	34700	33000	31200
	10	(-12.2)	11000	10500	10000	9500	8900	8400		10	(-12.2)	35300	33700	32100	30500	29000	27400
	5	(-15)	9700	9200	8700	8200	7800	7300		5	(-15)	31000	29600	28200	26700	25300	23900
0	(-17.8)	8420	7990	7570	7150	6730	6310	0	(-17.8)	27200	25900	24600	23300	22100	20800		
KRSB020M8 Compressor Model 2HES-2	45	-7	31300	30100	29000	27800	26600	25400	KRSB050M8 Compressor Model 4FES-5	45	-7	85300	81900	78500	75100	71700	68300
	40	-4	28200	27100	26000	24900	23800	22800		40	-4	76600	73500	70300	67200	64000	60900
	35	-2	25300	24300	23300	22300	21300	20300		35	-2	68600	65700	62800	59900	57000	54100
	30	(-1.1)	22700	21800	20800	19900	19000	18100		30	(-1.1)	61200	58500	55800	53200	50600	47900
	25	(-3.9)	20200	19400	18600	17700	16900	16000		25	(-3.9)	54400	51900	49500	47100	44700	42300
	20	(-6.7)	18000	17200	16500	15700	14900	14200		20	(-6.7)	48200	45900	43700	41500	39300	37100
	15	(-9.4)	16000	15200	14500	13800	13100	12500		15	(-9.4)	42500	40500	38400	36400	34400	32400
	10	(-12.2)	14100	13400	12800	12200	11500	10900		10	(-12.2)	37300	35500	33600	31800	30000	28200
	5	(-15)	12400	11800	11200	10600	10100	9500		5	(-15)	32600	31000	29300	27600	26000	24400
0	(-17.8)	10800	10300	9790	9270	8760	8250	0	(-17.8)	28400	26900	25400	23900	22400	21000		
KRSB025M8 Compressor Model 2GES-2	45	-7	36700	35300	33900	32600	31200	29800	KRSB060M8 Compressor Model 4EES-6	45	-7	108100	103800	99500	95300	91000	86800
	40	-4	33100	31800	30500	29300	28000	26700		40	-4	97100	93200	89200	85300	81400	77500
	35	-2	29700	28500	27400	26200	25000	23900		35	-2	87000	83300	79700	76100	72500	68900
	30	(-1.1)	26600	25600	24500	23400	22300	21300		30	(-1.1)	77700	74300	71000	67700	64400	61100
	25	(-3.9)	23800	22800	21800	20800	19900	18900		25	(-3.9)	69100	66100	63000	60000	57000	54000
	20	(-6.7)	21200	20300	19400	18500	17600	16700		20	(-6.7)	61300	58500	55700	52900	50200	47500
	15	(-9.4)	18800	18000	17100	16300	15500	14700		15	(-9.4)	54100	51600	49000	46500	44000	41600
	10	(-12.2)	16600	15800	15100	14400	13700	12900		10	(-12.2)	47600	45300	43000	40700	38500	36200
	5	(-15)	14600	13900	13300	12600	12000	11300		5	(-15)	41700	39600	37500	35500	33400	31400
0	(-17.8)	12800	12200	11600	11000	10400	9830	0	(-17.8)	36300	34400	32600	30700	28900	27100		
KRSB029M8 Compressor Model 2FES-3	45	-7	46300	44600	42800	41100	39400	37700	KRSB076M8 Compressor Model 4DES-7	45	-7	128600	123500	118500	113500	108600	103600
	40	-4	41700	40100	38500	36900	35400	33800		40	-4	115600	111000	106300	101700	97100	92600
	35	-2	37500	36000	34600	33100	31600	30200		35	-2	103600	99400	95100	90900	86700	82500
	30	(-1.1)	33600	32300	30900	29600	28200	26900		30	(-1.1)	92600	88700	84800	80900	77000	73200
	25	(-3.9)	30000	28800	27600	26300	25100	23900		25	(-3.9)	82500	78900	75300	71800	68300	64800
	20	(-6.7)	26700	25600	24500	23400	22300	21100		20	(-6.7)	73200	70000	66700	63500	60300	57100
	15	(-9.4)	23700	22700	21700	20700	19700	18600		15	(-9.4)	64800	61800	58800	55900	53000	50100
	10	(-12.2)	21000	20000	19100	18200	17300	16400		10	(-12.2)	57000	54300	51700	49000	46400	43800
	5	(-15)	18500	17600	16800	16000	15100	14300		5	(-15)	50000	47600	45200	42800	40400	38100
0	(-17.8)	16200	15400	14700	13900	13200	12500	0	(-17.8)	43700	41500	39300	37200	35100	33000		
KRSB030M8 Compressor Model 2EES-3	45	-7	53900	51800	49700	47600	45500	43400	15	(-9.4)	267700	255500	243400	231300	219300	207500	
	40	-4	48500	46500	44600	42600	40700	38800	10	(-12.2)	236300	225200	214200	203300	192400	181700	
	35	-2	43500	41700	39900	38100	36300	34500	5	(-15)	207500	197500	187600	177700	167900	158200	
	30	(-1.1)	38800	37200	35500	33900	32200	30600	0	(-17.8)	181200	172200	163300	154400	145600	136900	
	25	(-3.9)	34600	33000	31500	30000	28500	27000									
	20	(-6.7)	30600	29300	27900	26500	25100	23800									
	15	(-9.4)	27100	25800	24600	23300	22100	20800									
	10	(-12.2)	23800	22700	21500	20400	19300	18100									
	5	(-15)	20900	19800	18800	17800	16700	15700									
	0	(-17.8)	18200	17200	16300	15400	14500	13500									
	20	(-6.7)	348000	332700	317400	302300	287300	272300									
	15	(-9.4)	308500	294600	280800	267100	253400	239900									
	10	(-12.2)	272500	259900	247300	234900	222600	210300									
5	(-15)	239500	228100	216800	205600	194500	183400										
0	(-17.8)	209400	199100	189000	178900	168900	159000										

Above ratings are based on mean temperature. To convert to dew point ratings, use 0.95 multiplier.

Application Data calculated at 65°F Return Gas, 6°F Liquid Subcooling

Shaded Area Restriction: 20°F Max Superheat

**R407A** Medium/High Temperature “M8” (MEAN) SEMI-HERMETIC Models (cont’d)

Model KRSB	Suction Temp.		Selection Capacity BTU/h			Condensation Temperature		
			100	105	110	115	120	125
	°F	(°C)	-37.8	-40.6	-43.3	-46.1	-48.9	-51.7
KRSB090M8 Compressor Model 4CES-9	45	-7	157300	151300	145300	139300	133300	127400
	40	-4	141600	136000	130500	125000	119500	114000
	35	-2	127100	122000	116900	111800	106800	101700
	30	(-1.1)	113700	109000	104400	99700	95100	90500
	25	(-3.9)	101400	97200	92900	88700	84400	80300
	20	(-6.7)	90200	86300	82400	78600	74700	70900
	15	(-9.4)	79900	76400	72900	69400	65900	62500
	10	(-12.2)	70500	67300	64200	61000	57900	54800
	5	(-15)	62000	59100	56300	53500	50600	47900
	0	(-17.8)	54300	51700	49200	46600	44100	41600
KRSB100M8 Compressor Model 4VES-10	45	-7	165200	158400	151700	145000	138200	131600
	40	-4	148400	142100	135900	129700	123600	117400
	35	-2	132800	127100	121400	115800	110100	104500
	30	(-1.1)	118600	113300	108100	102900	97800	92600
	25	(-3.9)	105500	100700	95900	91200	86500	81800
	20	(-6.7)	93500	89100	84800	80500	76200	71900
	15	(-9.4)	82500	78600	74600	70700	66800	62900
	10	(-12.2)	72500	69000	65400	61900	58300	54800
	5	(-15)	63400	60200	57000	53800	50600	47500
	0	(-17.8)	55200	52300	49400	46500	43600	40800
KRSB120M8 Compressor Model 4TES-12	45	-7	199800	191900	184000	176100	168300	160400
	40	-4	179700	172500	165200	158000	150700	143500
	35	-2	161200	154500	147900	141200	134600	128000
	30	(-1.1)	144200	138100	132000	125900	119900	113800
	25	(-3.9)	128500	123000	117400	111900	106400	100900
	20	(-6.7)	114200	109200	104100	99100	94100	89100
	15	(-9.4)	101100	96500	92000	87400	82900	78300
	10	(-12.2)	89200	85000	80900	76800	72700	68600
	5	(-15)	78300	74600	70900	67200	63500	59800
	0	(-17.8)	68400	65100	61700	58400	55100	51800
KRSB150M8 Compressor Model 4PES-15	45	-7	230800	221300	211900	202500	193200	183800
	40	-4	207200	198600	189900	181300	172600	164000
	35	-2	185600	177600	169600	161700	153800	145900
	30	(-1.1)	165600	158300	151000	143800	136500	129300
	25	(-3.9)	147300	140600	134000	127400	120700	114200
	20	(-6.7)	130500	124500	118400	112400	106400	100400
	15	(-9.4)	115200	109700	104200	98700	93300	87900
	10	(-12.2)	101300	96300	91300	86300	81400	76500
	5	(-15)	88600	84100	79600	75100	70600	66200
	0	(-17.8)	77000	73000	68900	64900	60900	56900
KRSB200M8 Compressor Model 4NES-20	45	-7	270700	259900	249100	238300	227500	216800
	40	-4	243400	233400	223500	213500	203600	193800
	35	-2	218100	209000	199900	190800	181700	172600
	30	(-1.1)	194900	186600	178200	169900	161600	153300
	25	(-3.9)	173600	166000	158400	150800	143300	135700
	20	(-6.7)	154100	147200	140300	133400	126500	119700
	15	(-9.4)	136300	130000	123800	117500	111300	105100
	10	(-12.2)	120100	114400	108700	103100	97500	91900
	5	(-15)	105300	100200	95100	90000	84900	79900
	0	(-17.8)	91900	87300	82700	78100	73600	69000
KRSB250M8 Compressor Model 4HE-25	45	-7	345900	331900	318000	304100	290300	276600
	40	-4	311200	298300	285400	272600	259900	247200
	35	-2	279100	267200	255400	243600	231900	220200
	30	(-1.1)	249500	238600	227700	216900	206200	195500
	25	(-3.9)	222300	212300	202400	192500	182700	172900
	20	(-6.7)	197300	188200	179200	170100	161200	152300
	15	(-9.4)	174500	166200	157900	149700	141600	133500
	10	(-12.2)	153500	146000	138500	131100	123700	116400
	5	(-15)	134400	127600	120800	114100	107400	100800
	0	(-17.8)	117000	110800	104700	98600	92600	86700
KRSB300M8 Compressor Model 4GE-30	45	-7	402600	386800	371100	355400	339800	324300
	40	-4	362700	348200	333700	319300	304900	290600
	35	-2	325900	312500	299200	286000	272800	259700
	30	(-1.1)	291900	279700	267500	255300	243300	231300
	25	(-3.9)	260700	249500	238400	227300	216200	205300
	20	(-6.7)	232000	221800	211700	201600	191500	181600
	15	(-9.4)	205700	196500	187200	178100	169000	159900
	10	(-12.2)	181700	173300	164900	156600	148400	140200
	5	(-15)	159700	152100	144600	137100	129700	122300
	0	(-17.8)	139600	132800	126000	119300	112600	106000
KRSB350M8 Compressor Model 6HE-35	45	-7	525500	504800	484100	463500	443100	422700
	40	-4	473300	454200	435100	416200	397300	378600
	35	-2	425100	407500	390000	372600	355200	338000
	30	(-1.1)	380600	364500	348500	332500	316600	300800
	25	(-3.9)	339700	325000	310300	295700	281200	266800
	20	(-6.7)	302200	288700	275400	262100	248900	235800
	15	(-9.4)	267700	255500	243400	231300	219300	207500
	10	(-12.2)	236300	225200	214200	203300	192400	181700
	5	(-15)	207500	197500	187600	177700	167900	158200
	0	(-17.8)	181200	172200	163300	154400	145600	136900
KRSB400M8 Compressor Model 6GE-40	45	-7	603800	580100	556600	533100	509700	486500
	40	-4	544000	522200	500500	478800	457300	435900
	35	-2	488800	468700	448800	428900	409100	389500
	30	(-1.1)	437800	419500	401200	383000	364900	346900
	25	(-3.9)	391000	374200	357500	340900	324300	307900
	20	(-6.7)	348000	332700	317400	302300	287300	272300
	15	(-9.4)	308500	294600	280800	267100	253400	239900
	10	(-12.2)	272500	259900	247300	234900	222600	210300
	5	(-15)	239500	228100	216800	205600	194500	183400
	0	(-17.8)	209400	199100	189000	178900	168900	159000

Above ratings are based on mean temperature. To convert to dew point ratings, use 0.95 multiplier.  
 Application Data calculated at 65°F Return Gas, 6°F Liquid Subcooling  
 Shaded Area Restriction: 20°F Max Superheat

**R407C** Medium/High Temperature "M8" (MEAN) SEMI-HERMETIC Models

Model KRSB	Suction Temp.		Selection Capacity BTU/h			Condensation Temperature		
			100	105	110	115	120	125
	°F	(°C)	-37.8	-40.6	-43.3	-46.1	-48.9	-51.7
KRSB010M8 Compressor Model 2KES-05	45	-7	18800	18000	17200	16400	15700	14900
	40	-4	16800	16100	15400	14700	14000	13300
	35	-2	15100	14400	13800	13200	12500	11900
	30	(-1.1)	13400	12900	12300	11700	11100	10600
	25	(-3.9)	11900	11400	10900	10400	9900	9400
	20	(-6.7)	10600	10100	9700	9200	8700	8300
	15	(-9.4)	9300	8900	8500	8100	7700	7300
	10	(-12.2)	8200	7800	7500	7100	6700	6400
KRSB015M8 Compressor Model 2JES-07	45	-7	24600	23600	22600	21600	20700	19700
	40	-4	22100	21200	20300	19400	18500	17700
	35	-2	19800	19000	18200	17400	16600	15800
	30	(-1.1)	17700	17000	16200	15500	14800	14100
	25	(-3.9)	15800	15100	14500	13800	13200	12600
	20	(-6.7)	14000	13400	12900	12300	11700	11100
	15	(-9.4)	12400	11900	11400	10900	10400	9800
	10	(-12.2)	11000	10500	10000	9600	9100	8700
KRSB020M8 Compressor Model 2HES-2	45	-7	31000	29700	28600	27400	26200	25000
	40	-4	27800	26800	25700	24600	23500	22400
	35	-2	25000	24000	23000	22100	21100	20100
	30	(-1.1)	22400	21500	20600	19700	18900	18000
	25	(-3.9)	20000	19200	18400	17600	16800	16000
	20	(-6.7)	17800	17100	16400	15700	15000	14300
	15	(-9.4)	15800	15200	14500	13900	13300	12700
	10	(-12.2)	14000	13400	12900	12300	11700	11200
KRSB025M8 Compressor Model 2GES-2	45	-7	36200	34800	33400	32000	30600	29300
	40	-4	32600	31300	30100	28800	27600	26300
	35	-2	29300	28100	27000	25900	24700	23600
	30	(-1.1)	26200	25200	24200	23100	22100	21100
	25	(-3.9)	23400	22500	21600	20700	19800	18900
	20	(-6.7)	20900	20000	19200	18400	17600	16800
	15	(-9.4)	18500	17800	17100	16400	15600	14900
	10	(-12.2)	16400	15800	15100	14500	13800	13200
KRSB029M8 Compressor Model 2FES-3	45	-7	45500	43800	42000	40300	38500	36800
	40	-4	41000	39400	37800	36200	34700	33100
	35	-2	36800	35400	33900	32500	31100	29700
	30	(-1.1)	33000	31700	30400	29100	27800	26600
	25	(-3.9)	29400	28300	27100	26000	24800	23700
	20	(-6.7)	26200	25200	24200	23200	22100	21100
	15	(-9.4)	23300	22400	21500	20600	19600	18700
	10	(-12.2)	20600	19800	19000	18200	17400	16600
KRSB030M8 Compressor Model 2EES-3	45	-7	52900	50700	48600	46400	44300	42200
	40	-4	47500	45500	43600	41600	39700	37800
	35	-2	42500	40700	39000	37200	35500	33700
	30	(-1.1)	37900	36400	34800	33200	31600	30000
	25	(-3.9)	33800	32300	30900	29500	28100	26700
	20	(-6.7)	30000	28700	27400	26100	24900	23600
	15	(-9.4)	26500	25400	24200	23100	21900	20800
	10	(-12.2)	23300	22300	21300	20300	19300	18300
KRSB035M8 Compressor Model 2DES-3	45	-7	62700	60200	57700	55100	52600	50100
	40	-4	56300	54000	51700	49400	47200	44900
	35	-2	50500	48400	46300	44200	42200	40100
	30	(-1.1)	45100	43200	41300	39500	37600	35800
	25	(-3.9)	40100	38500	36800	35100	33500	31800
	20	(-6.7)	35600	34100	32600	31100	29700	28200
	15	(-9.4)	31500	30200	28900	27500	26200	24900
	10	(-12.2)	27800	26600	25400	24200	23000	21800
KRSB040M8 Compressor Model 2CES-4	45	-7	76400	73400	70300	67300	64300	61300
	40	-4	68700	65900	63200	60400	57700	54900
	35	-2	61600	59100	56600	54100	51600	49200
	30	(-1.1)	55000	52800	50600	48300	46100	43900
	25	(-3.9)	49100	47100	45000	43000	41100	39100
	20	(-6.7)	43600	41800	40000	38200	36400	34700
	15	(-9.4)	38600	37000	35400	33800	32200	30700
	10	(-12.2)	34100	32700	31300	29900	28400	27000
15	(-9.4)	202700	194400	186000	177700	169300	161000	
10	(-12.2)	178800	171300	163700	156200	148700	141200	

Model KRSB	Suction Temp.		Selection Capacity BTU/h			Condensation Temperature		
			100	105	110	115	120	125
	°F	(°C)	-37.8	-40.6	-43.3	-46.1	-48.9	-51.7
KRSB050M8 Compressor Model 4FES-5	45	-7	82800	79300	75800	72300	68800	65400
	40	-4	74200	71000	67800	64700	61500	58400
	35	-2	66300	63400	60500	57700	54800	52000
	30	(-1.1)	59000	56400	53900	51300	48700	46200
	25	(-3.9)	52400	50100	47800	45500	43100	40800
	20	(-6.7)	46400	44300	42200	40100	38100	36000
	15	(-9.4)	40900	39000	37200	35300	33500	31600
	10	(-12.2)	35900	34300	32600	30900	29300	27600
KRSB060M8 Compressor Model 4EES-6	45	-7	104200	99800	95400	91000	86700	82300
	40	-4	93400	89400	85400	81400	77500	73500
	35	-2	83400	79800	76200	72600	69000	65500
	30	(-1.1)	74300	71100	67800	64600	61300	58100
	25	(-3.9)	66000	63100	60100	57200	54300	51400
	20	(-6.7)	58400	55800	53100	50500	47900	45300
	15	(-9.4)	51500	49100	46800	44400	42100	39800
	10	(-12.2)	45200	43100	41000	38900	36800	34700
KRSB076M8 Compressor Model 4DES-7	45	-7	123900	118800	113600	108500	103400	98300
	40	-4	111100	106500	101800	97100	92500	87900
	35	-2	99400	95100	90900	86700	82500	78300
	30	(-1.1)	88600	84800	81000	77200	73400	69600
	25	(-3.9)	78800	75300	71900	68500	65100	61700
	20	(-6.7)	69800	66700	63700	60600	57500	54500
	15	(-9.4)	61600	58900	56100	53400	50700	47900
	10	(-12.2)	54200	51700	49300	46800	44400	42000
KRSB090M8 Compressor Model 4CES-9	45	-7	151600	145400	139300	133100	127000	120900
	40	-4	136100	130500	124900	119300	113800	108300
	35	-2	121800	116800	111700	106700	101700	96700
	30	(-1.1)	108800	104200	99700	95200	90700	86200
	25	(-3.9)	96900	92800	88700	84600	80600	76500
	20	(-6.7)	86000	82300	78700	75000	71400	67800
	15	(-9.4)	76100	72800	69500	66300	63000	59800
	10	(-12.2)	67000	64100	61200	58300	55400	52500
KRSB100M8 Compressor Model 4VES-10	45	-7	159200	152800	146400	139900	133500	127000
	40	-4	142900	137100	131200	125300	119300	113400
	35	-2	128000	122600	117200	111800	106400	100900
	30	(-1.1)	114200	109300	104400	99500	94500	89500
	25	(-3.9)	101600	97200	92700	88200	83700	79200
	20	(-6.7)	90100	86100	82000	77900	73800	69700
	15	(-9.4)	79600	75900	72200	68500	64800	61100
	10	(-12.2)	70000	66700	63300	60000	56700	53300
KRSB120M8 Compressor Model 4TES-12	45	-7	191300	183800	176200	168600	161000	153300
	40	-4	171900	165000	158100	151100	144100	137100
	35	-2	154100	147800	141400	135000	128700	122200
	30	(-1.1)	137700	131900	126100	120300	114500	108700
	25	(-3.9)	122700	117400	112200	106900	101600	96300
	20	(-6.7)	108900	104200	99400	94600	89800	85000
	15	(-9.4)	96400	92100	87800	83400	79100	74800
	10	(-12.2)	84900	81000	77200	73300	69400	65500
KRSB150M8 Compressor Model 4PES-15	45	-7	220900	211900	202900	193800	184700	175600
	40	-4	198200	189900	181700	173300	165000	156600
	35	-2	177300	169800	162200	154600	146900	139300
	30	(-1.1)	158200	151300	144300	137400	130400	123400
	25	(-3.9)	140600	134300	128000	121700	115300	109000
	20	(-6.7)	124500	118800	113100	107300	101600	95800
	15	(-9.4)	109800	104700	99500	94300	89100	83900
	10	(-12.2)	96500	91800	87100	82400	77700	73000
KRSB200M8 Compressor Model 4NES-20	45	-7	259000	248700	238400	228000	217500	207100
	40	-4	23					

**R407C** Medium/High Temperature "M8" (MEAN) SEMI-HERMETIC Models (cont'd)

Model KRSB	Suction Temp.		Selection Capacity BTU/h			Condensation Temperature		
			100	105	110	115	120	125
	°F	(°C)	-37.8	-40.6	-43.3	-46.1	-48.9	-51.7
KRSB250M8 Compressor Model 4HE-25	45	-7	342300	329100	316000	302800	289500	276300
	40	-4	307500	295500	283400	271300	259100	247000
	35	-2	275400	264400	253400	242300	231300	220200
	30	(-1.1)	245900	235900	225800	215800	205700	195600
	25	(-3.9)	218900	209700	200600	191400	182200	173100
	20	(-6.7)	194100	185800	177400	169100	160800	152600
	15	(-9.4)	171300	163800	156300	148800	141300	133800
	10	(-12.2)	150600	143800	136900	130200	123400	116700
KRSB300M8 Compressor Model 4GE-30	45	-7	399300	384500	369700	354800	339900	324900
	40	-4	359300	345800	332200	318600	305000	291300
	35	-2	322500	310200	297800	285400	272900	260500
	30	(-1.1)	288600	277400	266100	254800	243500	232200
	25	(-3.9)	257500	247300	237000	226800	216600	206300
	20	(-6.7)	228900	219700	210400	201100	191900	182600
	15	(-9.4)	202700	194400	186000	177700	169300	161000
	10	(-12.2)	178800	171300	163700	156200	148700	141200
KRSB350M8 Compressor Model 6HE-35	45	-7	496000	477200	458300	439200	419900	400500
	40	-4	445700	428500	411100	393600	375900	358200
	35	-2	399400	383700	367800	351800	335600	319400
	30	(-1.1)	356900	342600	328100	313500	298800	284100
	25	(-3.9)	318000	304900	291800	278500	265200	251900
	20	(-6.7)	282300	270600	258700	246700	234600	222600
	15	(-9.4)	249800	239200	228500	217700	206800	196000
	10	(-12.2)	220200	210600	201000	191300	181600	171800
KRSB400M8 Compressor Model 6GE-40	45	-7	579400	558200	536700	515100	493300	471400
	40	-4	521400	502000	482400	462600	442700	422600
	35	-2	468000	450300	432400	414400	396200	378000
	30	(-1.1)	419000	402900	386700	370300	353800	337200
	25	(-3.9)	374100	359500	344800	330000	315000	300100
	20	(-6.7)	333100	319900	306600	293200	279800	266300
	15	(-9.4)	295600	283700	271700	259700	247700	235600
	10	(-12.2)	261400	250700	240000	229200	218500	207700

Above ratings are based on mean temperature. To convert to dew point ratings, use 0.95 multiplier.  
 Application Data calculated at 65°F Return Gas, 6°F Liquid Subcooling  
 Shaded Area Restriction: 20°F Max Superheat

**SELECTION CAPACITY DATA - SEMI-HERMETIC MODELS**

**KRS - COMPRESSOR UNITS**

**R404A Low Temperature "L6" SEMI-HERMETIC Models**

Model KRSB	Suction Temp.		Selection Capacity BTU/h			Condensation Temperature		
			100	105	110	115	120	125
	°F	(°C)	-37.8	-40.6	-43.3	-46.1	-48.9	-51.7
KRSB010L6 Compressor Model 2HES-1	0	(-17.8)	10600	10000	9400	8800	8200	7600
	-5	(-20.6)	9300	8700	8200	7600	7100	6600
	-10	(-23.3)	8100	7600	7100	6600	6100	5700
	-15	(-26.1)	7000	6500	6100	5700	5200	4800
	-20	(-28.9)	6000	5600	5200	4800	4400	4000
	-25	(-31.7)	5100	4700	4300	4000	3600	3300
	-30	(-34.4)	4200	3900	3600	3300	2900	2600
	-35	(-37.2)	3500	3200	2900	2600	2300	2000
	-40	(-40)	2800	2500	2200	2000	1700	1400
KRSB015L6 Compressor Model 2FES-2	0	(-17.8)	15600	14700	13800	13000	12100	11300
	-5	(-20.6)	13700	12900	12100	11400	10600	9900
	-10	(-23.3)	12000	11200	10600	9900	9200	8600
	-15	(-26.1)	10400	9700	9100	8500	7900	7400
	-20	(-28.9)	8900	8400	7800	7300	6800	6300
	-25	(-31.7)	7600	7100	6600	6200	5700	5300
	-30	(-34.4)	6400	6000	5500	5100	4700	4300
	-35	(-37.2)	5300	4900	4500	4100	3800	3400
	-40	(-40)	4300	3900	3600	3300	2900	2600
KRSB020L6 Compressor Model 2EES-2	0	(-17.8)	20000	19000	17900	16800	15700	14600
	-5	(-20.6)	17600	16700	15700	14700	13700	12700
	-10	(-23.3)	15400	14600	13700	12800	11900	11000
	-15	(-26.1)	13400	12600	11800	11100	10300	9500
	-20	(-28.9)	11500	10800	10200	9400	8700	8000
	-25	(-31.7)	9800	9200	8600	8000	7300	6700
	-30	(-34.4)	8300	7700	7200	6600	6100	5500
	-35	(-37.2)	6900	6400	5900	5400	4900	4400
	-40	(-40)	5600	5100	4700	4200	3800	3300
KRSB025L6 Compressor Model 2DES-2	0	(-17.8)	24100	22800	21600	20300	19000	17700
	-5	(-20.6)	21200	20100	19000	17800	16700	15500
	-10	(-23.3)	18600	17600	16600	15500	14500	13500
	-15	(-26.1)	16200	15300	14400	13500	12500	11600
	-20	(-28.9)	14000	13200	12400	11600	10700	9900
	-25	(-31.7)	12000	11300	10500	9800	9100	8300
	-30	(-34.4)	10100	9500	8900	8200	7600	6900
	-35	(-37.2)	8500	7900	7300	6700	6100	5600
	-40	(-40)	6900	6400	5900	5400	4800	4300
KRSB030L6 Compressor Model 2CES-3	0	(-17.8)	29900	28400	26900	25400	23800	22300
	-5	(-20.6)	26400	25100	23700	22400	21000	19600
	-10	(-23.3)	23200	22000	20800	19600	18400	17100
	-15	(-26.1)	20300	19200	18200	17100	16000	14800
	-20	(-28.9)	17600	16700	15700	14700	13700	12700
	-25	(-31.7)	15200	14300	13500	12600	11700	10800
	-30	(-34.4)	12900	12200	11400	10600	9900	9100
	-35	(-37.2)	10900	10200	9500	8800	8100	7400
	-40	(-40)	9000	8400	7800	7200	6500	5900
KRSB031L6 Compressor Model 4FES-3	0	(-17.8)	32000	30400	28800	27200	25600	23900
	-5	(-20.6)	28200	26800	25400	24000	22500	21000
	-10	(-23.3)	24800	23500	22300	21000	19700	18400
	-15	(-26.1)	21700	20600	19500	18400	17200	16100
	-20	(-28.9)	18800	17900	16900	16000	15000	13900
	-25	(-31.7)	16300	15500	14600	13800	12900	12000
	-30	(-34.4)	14000	13300	12500	11800	11000	10200
	-35	(-37.2)	11900	11300	10600	10000	9300	8600
	-40	(-40)	10100	9500	8900	8300	7700	7100
KRSB039L6 Compressor Model 4EES-4	0	(-17.8)	40600	38600	36600	34600	32600	30500
	-5	(-20.6)	35800	34000	32300	30500	28700	26800
	-10	(-23.3)	31400	29900	28300	26700	25100	23500
	-15	(-26.1)	27500	26100	24700	23300	21900	20400
	-20	(-28.9)	23900	22700	21400	20200	19000	17700
	-25	(-31.7)	20600	19600	18500	17400	16300	15200
	-30	(-34.4)	17700	16800	15800	14900	13900	12900
	-35	(-37.2)	15100	14200	13400	12500	11700	10800
	-40	(-40)	12700	11900	11200	10400	9600	8900
KRSB050L6 Compressor Model 4DES-5	0	(-17.8)	48400	46000	43700	41300	38900	36600
	-5	(-20.6)	42700	40600	38500	36400	34300	32100
	-10	(-23.3)	37500	35600	33800	31900	30000	28100
	-15	(-26.1)	32800	31100	29500	27800	26100	24500
	-20	(-28.9)	28500	27100	25600	24100	22600	21200
	-25	(-31.7)	24700	23400	22100	20800	19500	18200
	-30	(-34.4)	21200	20000	18900	17700	16600	15400
	-35	(-37.2)	18000	17000	16000	15000	14000	13000
	-40	(-40)	15100	14300	13400	12500	11600	10700
KRSB060L6 Compressor Model 4CES-6	0	(-17.8)	58300	55400	52600	49700	46900	44000
	-5	(-20.6)	51400	48800	46200	43600	41100	38500
	-10	(-23.3)	45100	42700	40400	38100	35900	33600
	-15	(-26.1)	39300	37300	35200	33200	31100	29100
	-20	(-28.9)	34100	32300	30400	28600	26800	25000
	-25	(-31.7)	29400	27800	26200	24600	23000	21400
	-30	(-34.4)	25100	23700	22300	20900	19500	18100
	-35	(-37.2)	21300	20000	18700	17500	16300	15100
	-40	(-40)	17800	16600	15500	14500	13400	12300
KRSB080L6 Compressor Model 4TES-9	0	(-17.8)	73000	69200	65400	61600	57900	54200
	-5	(-20.6)	64000	60600	57200	53900	50500	47200
	-10	(-23.3)	55900	52800	49800	46800	43800	40800
	-15	(-26.1)	48500	45800	43100	40400	37800	35100
	-20	(-28.9)	41800	39400	37000	34600	32300	30000
	-25	(-31.7)	35700	33600	31500	29400	27400	25300
	-30	(-34.4)	30300	28400	26600	24700	22900	21100
	-35	(-37.2)	25400	23700	22100	20500	18900	17200
	-40	(-40)	21000	19500	18000	16600	15200	13700
KRSB100L6 Compressor Model 4PES-12	0	(-17.8)	82700	78100	73500	69000	64400	59900
	-5	(-20.6)	72200	68100	64000	59900	55800	51800
	-10	(-23.3)	62700	59000	55300	51700	48000	44400
	-15	(-26.1)	54000	50800	47500	44200	41000	37800
	-20	(-28.9)	46300	43300	40400	37600	34700	31900
	-25	(-31.7)	39200	36600	34100	31500	29000	26500
	-30	(-34.4)	32900	30600	28300	26100	23900	21700
	-35	(-37.2)	27200	25200	23200	21200	19200	17300
	-40	(-40)	22100	20300	18500	16700	15000	13300
KRSB120L6 Compressor Model 4NES-14	0	(-17.8)	99400	94200	89000	83700	78500	73200
	-5	(-20.6)	87200	82500	77800	73100	68400	63700
	-10	(-23.3)	76000	71900	67700	63500	59300	55000
	-15	(-26.1)	66000	62300	58500	54800	51000	47300
	-20	(-28.9)	56900	53600	50300	46900	43600	40200
	-25	(-31.7)	48700	45700	42800	39800	36900	33900
	-30	(-34.4)	41300	38600	36000	33400	30800	28200
	-35	(-37.2)	34600	32200	29900	27600	25300	23000
	-40	(-40)	28600	26500	24400	22300	20200	18200
KRSB130L6 Compressor Model 4JE-15	0	(-17.8)	116100	110400	104600	98900	93200	87400
	-5	(-20.6)	102400	97200	92100	86900	81700	76600
	-10	(-23.3)	89800	85200	80600	75900	71300	66700
	-15	(-26.1)	78400	74200	70100	65900	61800	57600
	-20	(-28.9)	67900	64200	60500	56800	53100	49400
	-25	(-31.7)	58400	55100	51800	48500	45200	41900
	-30	(-34.4)	49700	46800	43800	40900	38000	35100
	-35	(-37.2)	41800	39200	36600	34000	31400	28800
	-40	(-40)	34600	32300	29900	27600	25300	23000
KRSB150L6 Compressor Model 4HE-18	0	(-17.8)	136500	129900	123300	116700	110100	103400
	-5	(-20.6)	120600	114700	108800	102900	96900	91000
	-10	(-23.3)	106100	100900	95600	90200	84900	79600
	-15	(-26.1)	92900	88200	83400	78700	74000	69200
	-20	(-28.9)	80800	76600	72400	68200	64000	59800
	-25	(-31.7)	69800	66100	62300	58600	54900	51200
	-30	(-34.4)	59800	56400	53100	49800	46600	43300
	-35	(-37.2)	50600	47700	44700	41800	38900	36100
	-40	(-40)	42300	39600	37000	34500	31900	29400

Application Data calculated at 65°F Return Gas, 6°F Liquid Subcooling  
Shaded Area Restriction: 20°F Max Superheat

**R404A Low Temperature "L6" SEMI-HERMETIC Models (cont'd)**

Model KRSB	Suction Temp.		Selection Capacity BTU/h			Condensation Temperature		
			100	105	110	115	120	125
	°F	(°C)	-37.8	-40.6	-43.3	-46.1	-48.9	-51.7
KRSB200L6 Compressor Model 4GE-23	0	(-17.8)	158800	151400	143900	136300	128700	121100
	-5	(-20.6)	140700	134100	127300	120600	113800	107000
	-10	(-23.3)	124200	118200	112200	106200	100200	94100
	-15	(-26.1)	109000	103700	98400	93100	87700	82400
	-20	(-28.9)	95200	90500	85800	81100	76400	71700
	-25	(-31.7)	82600	78500	74300	70200	66000	61900
	-30	(-34.4)	71100	67500	63800	60200	56600	52900
	-35	(-37.2)	60700	57400	54200	51000	47900	44700
	-40	(-40)	51100	48300	45400	42600	39900	37100
KRSB250L6 Compressor Model 6HE-28	0	(-17.8)	200500	191000	181400	171700	162000	152300
	-5	(-20.6)	177300	168700	160100	151400	142700	134000
	-10	(-23.3)	156100	148400	140600	132900	125000	117200
	-15	(-26.1)	136700	129800	122900	115900	108900	101900
	-20	(-28.9)	119000	112800	106700	100400	94200	88000
	-25	(-31.7)	102900	97400	91900	86300	80800	75200
	-30	(-34.4)	88200	83300	78400	73400	68500	63600
	-35	(-37.2)	74800	70400	66000	61600	57200	52800
	-40	(-40)	62500	58600	54700	50800	46800	42900
KRSB300L6 Compressor Model 6GE-34	0	(-17.8)	235900	225200	214500	203800	192900	181900
	-5	(-20.6)	209600	200100	190500	180900	171200	161300
	-10	(-23.3)	185500	177000	168500	159900	151300	142500
	-15	(-26.1)	163500	156000	148400	140800	133000	125200
	-20	(-28.9)	143400	136700	130000	123200	116300	109300
	-25	(-31.7)	125000	119100	113100	107100	101000	94800
	-30	(-34.4)	108200	103000	97700	92400	86900	81400
	-35	(-37.2)	92900	88200	83600	78800	73900	69000
	-40	(-40)	78900	74700	70500	66200	61900	57400
KRSB400L6 Compressor Model 6FE-44	0	(-17.8)	283000	270000	257000	243700	230400	217000
	-5	(-20.6)	251200	239600	227900	216000	204100	192000
	-10	(-23.3)	222000	211600	201200	190600	179900	169100
	-15	(-26.1)	195200	186000	176700	167200	157700	148000
	-20	(-28.9)	170800	162500	154200	145700	137200	128600
	-25	(-31.7)	148300	141000	133500	126000	118400	110600
	-30	(-34.4)	127800	121200	114600	107800	100900	94000
	-35	(-37.2)	109000	103100	97000	90900	84700	78400
	-40	(-40)	91800	86300	80800	75200	69600	63800

Application Data calculated at 65°F Return Gas, 6°F Liquid Subcooling  
Shaded Area Restriction: 20°F Max Superheat

**R448A** Low Temperature "L8" (MEAN) SEMI-HERMETIC Models

Model KRSB	Suction Temp.		Selection Capacity BTU/h			Condensation Temperature		
			100	105	110	115	120	125
	°F	(°C)	-37.8	-40.6	-43.3	-46.1	-48.9	-51.7
KRSB010L8 Compressor Model 2HES-1	0	(-17.8)	10100	9500	8900	8400	7800	7200
	-5	(-20.6)	8700	8200	7700	7200	6700	6100
	-10	(-23.3)	7400	7000	6500	6100	5600	5100
	-15	(-26.1)	6300	5900	5500	5100	4700	4200
	-20	(-28.9)	5300	4900	4600	4200	3800	3400
	-25	(-31.7)	4400	4100	3700	3400	3000	2700
	-30	(-34.4)	3600	3300	3000	2700	2300	2000
	-35	(-37.2)	2800	2500	2300	2000	1700	1400
	-40	(-40)	2100	1900	1600	1400	1100	900
KRSB015L8 Compressor Model 2FES-2	0	(-17.8)	15100	14300	13400	12600	11800	11000
	-5	(-20.6)	13000	12300	11600	10800	10100	9300
	-10	(-23.3)	11200	10500	9900	9200	8500	7900
	-15	(-26.1)	9500	8900	8400	7700	7100	6500
	-20	(-28.9)	8000	7500	7000	6400	5900	5300
	-25	(-31.7)	6700	6200	5700	5200	4700	4200
	-30	(-34.4)	5500	5000	4600	4100	3700	3200
	-35	(-37.2)	4400	4000	3600	3200	2700	2300
	-40	(-40)	3400	3000	2600	2300	1900	1500
KRSB020L8 Compressor Model 2EES-2	0	(-17.8)	18900	18000	17000	16100	15200	14200
	-5	(-20.6)	16400	15600	14700	13900	13000	12200
	-10	(-23.3)	14200	13400	12600	11900	11100	10300
	-15	(-26.1)	12100	11400	10700	10000	9400	8700
	-20	(-28.9)	10300	9700	9000	8400	7800	7200
	-25	(-31.7)	8600	8100	7500	7000	6400	5900
	-30	(-34.4)	7100	6600	6100	5600	5100	4600
	-35	(-37.2)	5800	5300	4900	4400	4000	3500
	-40	(-40)	4600	4200	3800	3300	2900	2500
KRSB025L8 Compressor Model 2DES-2	0	(-17.8)	22700	21600	20500	19400	18300	17200
	-5	(-20.6)	19800	18800	17800	16800	15800	14800
	-10	(-23.3)	17100	16200	15300	14400	13500	12600
	-15	(-26.1)	14700	13900	13100	12300	11500	10700
	-20	(-28.9)	12500	11800	11000	10300	9600	8900
	-25	(-31.7)	10500	9900	9200	8600	8000	7300
	-30	(-34.4)	8800	8200	7600	7000	6500	5900
	-35	(-37.2)	7200	6700	6100	5600	5100	4600
	-40	(-40)	5700	5300	4800	4300	3900	3400
KRSB030L8 Compressor Model 2CES-3	0	(-17.8)	28200	26900	25500	24200	23000	21700
	-5	(-20.6)	24600	23400	22200	21100	19900	18700
	-10	(-23.3)	21300	20300	19200	18200	17100	16100
	-15	(-26.1)	18400	17500	16500	15600	14600	13700
	-20	(-28.9)	15800	14900	14100	13200	12400	11600
	-25	(-31.7)	13400	12600	11900	11100	10400	9700
	-30	(-34.4)	11200	10600	9900	9200	8600	8000
	-35	(-37.2)	9300	8700	8100	7500	7000	6400
	-40	(-40)	7600	7000	6500	6000	5500	5000
KRSB031L8 Compressor Model 4FES-3	0	(-17.8)	30800	29300	27900	26400	25000	23500
	-5	(-20.6)	26900	25500	24200	22900	21600	20300
	-10	(-23.3)	23300	22100	20900	19700	18500	17400
	-15	(-26.1)	20000	19000	17900	16800	15800	14800
	-20	(-28.9)	17100	16200	15200	14300	13400	12500
	-25	(-31.7)	14500	13600	12800	12000	11200	10400
	-30	(-34.4)	12100	11400	10600	9900	9200	8500
	-35	(-37.2)	10000	9400	8700	8100	7400	6800
	-40	(-40)	8100	7500	6900	6400	5800	5300
KRSB039L8 Compressor Model 4EES-4	-5	(-20.6)	33600	31900	30200	28600	26900	25300
	-10	(-23.3)	29100	27600	26100	24600	23100	21700
	-15	(-26.1)	25000	23600	22300	21000	19700	18400
	-20	(-28.9)	21300	20100	18900	17800	16600	15500
	-25	(-31.7)	18100	17000	15900	14900	13900	12900
	-30	(-34.4)	15100	14100	13200	12300	11400	10500
-35	(-37.2)	12400	11600	10800	10000	9200	8400	
-40	(-40)	10000	9300	8600	7900	7200	6500	

Model KRSB	Suction Temp.		Selection Capacity BTU/h			Condensation Temperature		
			100	105	110	115	120	125
	°F	(°C)	-37.8	-40.6	-43.3	-46.1	-48.9	-51.7
KRSB050L8 Compressor Model 4DES-5	0	(-17.8)	45300	43100	40900	38700	36500	34400
	-5	(-20.6)	39400	37400	35400	33400	31500	29600
	-10	(-23.3)	34100	32300	30500	28700	27000	25300
	-15	(-26.1)	29300	27700	26100	24500	23000	21400
	-20	(-28.9)	25000	23500	22100	20700	19300	18000
	-25	(-31.7)	21100	19800	18500	17300	16100	14900
	-30	(-34.4)	17600	16500	15400	14300	13200	12200
	-35	(-37.2)	14500	13500	12500	11500	10600	9700
	-40	(-40)	11600	10800	9900	9100	8300	7500
KRSB060L8 Compressor Model 4CES-6	0	(-17.8)	56300	53600	51000	48400	45800	43300
	-5	(-20.6)	49100	46700	44400	42000	39700	37500
	-10	(-23.3)	42600	40500	38400	36300	34200	32200
	-15	(-26.1)	36800	34900	33000	31100	29300	27500
	-20	(-28.9)	31500	29800	28200	26500	24900	23300
	-25	(-31.7)	26800	25300	23800	22400	20900	19600
	-30	(-34.4)	22600	21200	19900	18600	17400	16200
	-35	(-37.2)	18700	17600	16400	15300	14200	13200
	-40	(-40)	15300	14300	13200	12300	11300	10400
KRSB080L8 Compressor Model 4TES-9	0	(-17.8)	70100	66600	63100	59700	56300	52900
	-5	(-20.6)	60900	57700	54600	51500	48500	45400
	-10	(-23.3)	52500	49700	46900	44200	41400	38700
	-15	(-26.1)	45000	42500	40000	37600	35100	32700
	-20	(-28.9)	38300	36100	33900	31700	29500	27300
	-25	(-31.7)	32300	30300	28300	26400	24400	22500
	-30	(-34.4)	26800	25100	23300	21600	19900	18200
	-35	(-37.2)	22000	20400	18800	17300	15700	14200
	-40	(-40)	17600	16200	14800	13400	12000	10600
KRSB100L8 Compressor Model 4PES-12	0	(-17.8)	79000	74700	70500	66300	62100	57900
	-5	(-20.6)	68200	64400	60600	56800	53000	49300
	-10	(-23.3)	58500	55100	51600	48200	44900	41500
	-15	(-26.1)	49800	46700	43600	40600	37600	34600
	-20	(-28.9)	42000	39200	36500	33800	31100	28500
	-25	(-31.7)	35000	32500	30100	27700	25300	23000
	-30	(-34.4)	28700	26500	24400	22300	20200	18100
	-35	(-37.2)	23100	21200	19300	17400	15500	13700
	-40	(-40)	18100	16400	14600	13000	11300	9700
KRSB120L8 Compressor Model 4NES-14	0	(-17.8)	95400	90600	85700	80900	76000	71100
	-5	(-20.6)	82800	78500	74100	69700	65400	61000
	-10	(-23.3)	71500	67600	63700	59700	55800	51900
	-15	(-26.1)	61200	57800	54300	50800	47300	43800
	-20	(-28.9)	52100	49000	45900	42700	39600	36500
	-25	(-31.7)	43900	41100	38300	35500	32800	30000
	-30	(-34.4)	36500	34000	31500	29100	26600	24200
	-35	(-37.2)	29900	27700	25500	23300	21100	18900
	-40	(-40)	23900	21900	20000	18000	16100	14200
KRSB130L8 Compressor Model 4JE-15	0	(-17.8)	111800	106600	101300	96100	90900	85700
	-5	(-20.6)	97600	92900	88200	83400	78700	74000
	-10	(-23.3)	84800	80500	76200	72000	67700	63500
	-15	(-26.1)	73100	69200	65400	61500	57700	54000
	-20	(-28.9)	62500	59000	55600	52100	48700	45300
	-25	(-31.7)	52900	49800	46700	43600	40500	37500
	-30	(-34.4)	44200	41400	38600	35800	33100	30400
	-35	(-37.2)	36300	33800	31300	28800	26300	23900
	-40	(-40)	29100	26800	24500	22300	20100	17900
KRSB150L8 Compressor Model 4HE-18	0	(-17.8)	131600	125700	119700	113700	107700	101800
	-5	(-20.6)	115300	109900	104500	99100	93800	88400
	-10	(-23.3)	100400	95600	90700	85900	81100	76300
	-15	(-26.1)	86900	82600	78300	74000	69700	65400
	-20	(-28.9)	74700	70800	67000	63100	59300	55500
	-25	(-31.7)	63600	60100	56700	53300	49900	46500
	-30	(-34.4)	53500	50500	47400	44400	41300	38400
	-35	(-37.2)	44400	41600	38900	36200	33500	30900
	-40	(-40)	36100	33600	31100	28700	26400	24000

**R448A** Low Temperature "L8" (MEAN) SEMI-HERMETIC Models (cont'd)

Model KRSB	Suction Temp.		Selection Capacity BTU/h			Condensation Temperature		
			100	105	110	115	120	125
	°F	(°C)	-37.8	-40.6	-43.3	-46.1	-48.9	-51.7
KRSB200L8 Compressor Model 4GE-23	0	(-17.8)	153400	146700	139900	133200	126400	119700
	-5	(-20.6)	134800	128700	122700	116600	110600	104600
	-10	(-23.3)	117800	112400	107000	101600	96200	90900
	-15	(-26.1)	102400	97600	92800	88000	83300	78600
	-20	(-28.9)	88400	84200	79900	75700	71500	67400
	-25	(-31.7)	75700	72000	68200	64500	60900	57200
	-30	(-34.4)	64200	60900	57600	54400	51200	48000
	-35	(-37.2)	53800	50900	48000	45100	42300	39600
KRSB250L8 Compressor Model 6HE-28	0	(-17.8)	193600	184900	176100	167400	158700	149900
	-5	(-20.6)	169600	161700	153900	146000	138100	130200
	-10	(-23.3)	147800	140700	133600	126500	119400	112300
	-15	(-26.1)	128000	121700	115300	108900	102500	96100
	-20	(-28.9)	110100	104400	98600	92900	87200	81400
	-25	(-31.7)	93800	88700	83500	78400	73200	68000
	-30	(-34.4)	79000	74400	69800	65200	60500	55900
	-35	(-37.2)	65600	61400	57300	53100	48900	44700
KRSB300L8 Compressor Model 6GE-34	0	(-17.8)	228800	219300	209700	200000	190300	180500
	-5	(-20.6)	201700	193100	184500	175900	167100	158300
	-10	(-23.3)	177000	169300	161600	153900	146100	138100
	-15	(-26.1)	154500	147700	140800	133900	126800	119700
	-20	(-28.9)	134000	128000	121800	115600	109300	102900
	-25	(-31.7)	115500	110000	104500	98900	93300	87500
	-30	(-34.4)	98500	93600	88700	83700	78500	73300
	-35	(-37.2)	83100	78700	74200	69600	64900	60100
KRSB400L8 Compressor Model 6FE-44	0	(-17.8)	274000	262300	250500	238600	226700	214800
	-5	(-20.6)	241100	230600	220000	209400	198700	187900
	-10	(-23.3)	211100	201700	192200	182600	173000	163400
	-15	(-26.1)	183800	175300	166800	158200	149600	140900
	-20	(-28.9)	158900	151200	143600	135900	128100	120200
	-25	(-31.7)	136100	129300	122300	115300	108300	101200
	-30	(-34.4)	115400	109100	102800	96500	90100	83600
	-35	(-37.2)	96300	90600	84800	79000	73100	67100
-40	(-40)	78800	73500	68100	62700	57200	51600	

**R407A** Low Temperature "L8" (MEAN) SEMI-HERMETIC Models

Model KRSB	Suction Temp.		Selection Capacity BTU/h			Condensation Temperature		
			100	105	110	115	120	125
	°F	(°C)						
KRSB010L8 Compressor Model 2HES-1	0	(-17.8)	10800	10300	9800	9300	8700	8200
	-5	(-20.6)	9400	8900	8500	8000	7500	7100
	-10	(-23.3)	8100	7700	7300	6900	6400	6000
	-15	(-26.1)	7000	6600	6200	5800	5500	5100
	-20	(-28.9)	5900	5600	5200	4900	4600	4300
	-25	(-31.7)	5000	4700	4400	4100	3800	3500
	-30	(-34.4)	4100	3900	3600	3300	3100	2800
	-35	(-37.2)	3400	3100	2900	2700	2400	2200
	-40	(-40)	2700	2500	2200	2000	1800	1600
KRSB015L8 Compressor Model 2FES-2	0	(-17.8)	16200	15400	14700	13900	13200	12500
	-5	(-20.6)	14100	13400	12700	12100	11400	10800
	-10	(-23.3)	12200	11600	11000	10400	9800	9200
	-15	(-26.1)	10500	10000	9400	8900	8400	7900
	-20	(-28.9)	9000	8500	8000	7500	7100	6600
	-25	(-31.7)	7600	7200	6700	6300	5900	5500
	-30	(-34.4)	6400	6000	5600	5200	4900	4500
	-35	(-37.2)	5200	4900	4600	4200	3900	3600
	-40	(-40)	4200	3900	3600	3300	3000	2800
KRSB020L8 Compressor Model 2EES-2	0	(-17.8)	18100	17200	16300	15400	14400	13500
	-5	(-20.6)	15700	14800	14000	13200	12400	11500
	-10	(-23.3)	13500	12700	12000	11200	10500	9700
	-15	(-26.1)	11500	10800	10100	9400	8800	8100
	-20	(-28.9)	9700	9100	8500	7900	7300	6700
	-25	(-31.7)	8100	7500	7000	6400	5900	5400
	-30	(-34.4)	6600	6100	5600	5200	4700	4300
	-35	(-37.2)	5300	4900	4500	4000	3600	3200
	-40	(-40)	4100	3800	3400	3000	2600	2300
KRSB025L8 Compressor Model 2DES-2	0	(-17.8)	21800	20700	19600	18600	17500	16500
	-5	(-20.6)	18900	17900	17000	16000	15000	14100
	-10	(-23.3)	16300	15400	14500	13700	12800	12000
	-15	(-26.1)	13900	13100	12400	11600	10800	10100
	-20	(-28.9)	11800	11100	10400	9700	9000	8400
	-25	(-31.7)	9900	9300	8600	8000	7400	6800
	-30	(-34.4)	8200	7600	7100	6500	6000	5500
	-35	(-37.2)	6600	6100	5700	5200	4700	4300
	-40	(-40)	5200	4800	4400	3900	3500	3100
KRSB030L8 Compressor Model 2CES-3	0	(-17.8)	27100	25800	24600	23300	22000	20800
	-5	(-20.6)	23600	22500	21300	20200	19000	17900
	-10	(-23.3)	20400	19400	18400	17300	16300	15300
	-15	(-26.1)	17600	16600	15700	14800	13900	13000
	-20	(-28.9)	15000	14200	13300	12500	11700	11000
	-25	(-31.7)	12700	11900	11200	10500	9800	9100
	-30	(-34.4)	10600	9900	9300	8700	8000	7500
	-35	(-37.2)	8700	8100	7600	7000	6500	6000
	-40	(-40)	7000	6500	6000	5500	5100	4600
KRSB031L8 Compressor Model 4FES-3	0	(-17.8)	28300	26800	25300	23900	22400	21000
	-5	(-20.6)	24500	23100	21800	20400	19100	17800
	-10	(-23.3)	21000	19800	18500	17400	16200	15000
	-15	(-26.1)	17800	16700	15700	14600	13600	12500
	-20	(-28.9)	15000	14000	13100	12100	11200	10300
	-25	(-31.7)	12500	11600	10800	9900	9100	8300
	-30	(-34.4)	10200	9500	8700	8000	7200	6600
	-35	(-37.2)	8200	7500	6900	6200	5600	5000
	-40	(-40)	6400	5800	5200	4600	4100	3600
KRSB039L8 Compressor Model 4EES-4	0	(-17.8)	36300	34400	32500	30700	28900	27100
	-5	(-20.6)	31400	29700	28000	26400	24700	23100
	-10	(-23.3)	27000	25500	24000	22500	21000	19600
	-15	(-26.1)	23000	21700	20300	19000	17700	16400
	-20	(-28.9)	19500	18200	17000	15900	14700	13600
	-25	(-31.7)	16300	15200	14100	13100	12100	11100
	-30	(-34.4)	13400	12400	11500	10600	9700	8900
	-35	(-37.2)	10800	10000	9200	8400	7600	6800
	-40	(-40)	8500	7800	7100	6400	5700	5000

Model KRSB	Suction Temp.		Selection Capacity BTU/h			Condensation Temperature		
			100	105	110	115	120	125
	°F	(°C)						
KRSB050L8 Compressor Model 4DES-5	0	(-17.8)	43600	41400	39300	37100	35000	32900
	-5	(-20.6)	37800	35900	33900	32000	30100	28200
	-10	(-23.3)	32600	30900	29100	27400	25700	24000
	-15	(-26.1)	27900	26300	24800	23200	21700	20300
	-20	(-28.9)	23700	22300	20900	19500	18200	16900
	-25	(-31.7)	19900	18700	17400	16200	15100	13900
	-30	(-34.4)	16500	15400	14300	13300	12300	11300
	-35	(-37.2)	13500	12500	11500	10600	9700	8900
	-40	(-40)	10700	9900	9000	8200	7400	6700
KRSB060L8 Compressor Model 4CES-6	0	(-17.8)	54300	51700	49100	46600	44100	41600
	-5	(-20.6)	47200	44900	42600	40300	38100	35900
	-10	(-23.3)	40900	38800	36700	34700	32700	30800
	-15	(-26.1)	35200	33300	31500	29700	27900	26200
	-20	(-28.9)	30000	28400	26800	25200	23600	22100
	-25	(-31.7)	25400	24000	22500	21100	19700	18400
	-30	(-34.4)	21300	20000	18700	17500	16300	15100
	-35	(-37.2)	17600	16400	15300	14200	13200	12200
	-40	(-40)	14200	13200	12200	11300	10400	9500
KRSB080L8 Compressor Model 4TES-9	0	(-17.8)	68300	64900	61500	58100	54800	51600
	-5	(-20.6)	59200	56200	53100	50100	47200	44200
	-10	(-23.3)	51100	48300	45600	42900	40300	37700
	-15	(-26.1)	43700	41200	38800	36400	34000	31700
	-20	(-28.9)	37000	34800	32600	30500	28400	26400
	-25	(-31.7)	30900	29000	27100	25200	23300	21500
	-30	(-34.4)	25500	23700	22000	20400	18700	17100
	-35	(-37.2)	20500	19000	17500	16000	14500	13100
	-40	(-40)	16000	14600	13300	11900	10700	9400
KRSB100L8 Compressor Model 4PES-12	0	(-17.8)	76800	72700	68600	64600	60600	56700
	-5	(-20.6)	66300	62600	58900	55300	51700	48200
	-10	(-23.3)	56800	53500	50200	46900	43700	40500
	-15	(-26.1)	48200	45200	42200	39300	36500	33600
	-20	(-28.9)	40400	37700	35100	32500	30000	27500
	-25	(-31.7)	33400	31000	28700	26300	24100	21900
	-30	(-34.4)	27000	24900	22800	20800	18800	16800
	-35	(-37.2)	21300	19400	17500	15700	13900	12200
	-40	(-40)	16000	14400	12700	11100	9500	8000
KRSB120L8 Compressor Model 4NES-14	0	(-17.8)	92000	87300	82700	78100	73600	69100
	-5	(-20.6)	79700	75500	71400	67200	63200	59200
	-10	(-23.3)	68600	64800	61100	57400	53800	50200
	-15	(-26.1)	58600	55200	51900	48600	45400	42200
	-20	(-28.9)	49500	46500	43500	40600	37700	34900
	-25	(-31.7)	41300	38600	36000	33400	30900	28400
	-30	(-34.4)	33900	31500	29200	26900	24600	22400
	-35	(-37.2)	27100	25000	23000	20900	18900	17000
	-40	(-40)	21000	19100	17300	15500	13700	12000
KRSB130L8 Compressor Model 4JE-15	0	(-17.8)	103600	98300	93100	88000	82900	77900
	-5	(-20.6)	89800	85000	80300	75600	71100	66600
	-10	(-23.3)	77100	72800	68600	64500	60400	56400
	-15	(-26.1)	65600	61800	58000	54300	50700	47100
	-20	(-28.9)	55200	51700	48400	45100	41900	38800
	-25	(-31.7)	45600	42600	39600	36700	33900	31100
	-30	(-34.4)	36900	34200	31600	29000	26600	24100
	-35	(-37.2)	28900	26500	24200	22000	19800	17700
	-40	(-40)	21500	19400	17400	15400	13500	11700

Above ratings are based on mean temperature. To convert to dew point ratings, use 0.95 multiplier.

Application Data calculated at 65°F Return Gas, 6°F Liquid Subcooling

Shaded Area Restriction: 20°F Max Superheat

**R407A** Low Temperature "L8" (MEAN) SEMI-HERMETIC Models (cont'd)

Model KRSB	Suction Temp.		Selection Capacity BTU/h			Condensation Temperature		
			100	105	110	115	120	125
	°F	(°C)						
KRSB150L8 Compressor Model 4HE-18	0	(-17.8)	123200	117200	111300	105400	99700	94000
	-5	(-20.6)	107100	101700	96300	91100	85900	80900
	-10	(-23.3)	92400	87600	82800	78100	73500	69000
	-15	(-26.1)	79000	74700	70400	66300	62200	58200
	-20	(-28.9)	66800	63000	59200	55500	51900	48400
	-25	(-31.7)	55700	52300	49000	45700	42500	39400
	-30	(-34.4)	45600	42600	39600	36700	33900	31200
	-35	(-37.2)	36200	33600	31000	28500	26000	23700
	-40	(-40)	27600	25200	23000	20800	18600	16600
KRSB200L8 Compressor Model 4GE-23	0	(-17.8)	145500	138900	132300	125900	119500	113200
	-5	(-20.6)	127100	121100	115200	109400	103700	98100
	-10	(-23.3)	110300	104900	99700	94500	89400	84400
	-15	(-26.1)	94900	90200	85500	80900	76400	72000
	-20	(-28.9)	80900	76700	72600	68500	64600	60700
	-25	(-31.7)	68200	64500	60800	57200	53700	50400
	-30	(-34.4)	56500	53200	50000	46900	43800	40900
	-35	(-37.2)	45700	42800	40000	37300	34600	32100
	-40	(-40)	35700	33200	30700	28400	26100	23900
KRSB250L8 Compressor Model 6HE-28	0	(-17.8)	184800	175800	166900	158100	149500	141000
	-5	(-20.6)	160600	152500	144500	136700	128900	121300
	-10	(-23.3)	138600	131300	124200	117100	110200	103500
	-15	(-26.1)	118500	112100	105700	99400	93300	87300
	-20	(-28.9)	100300	94500	88900	83300	77900	72600
	-25	(-31.7)	83600	78500	73500	68600	63800	59200
	-30	(-34.4)	68400	63900	59500	55200	51000	46900
	-35	(-37.2)	54400	50400	46500	42800	39100	35600
	-40	(-40)	41400	37900	34500	31200	28000	25000
KRSB300L8 Compressor Model 6GE-34	0	(-17.8)	212700	202400	192300	182300	172500	162800
	-5	(-20.6)	185000	175800	166700	157700	148900	140200
	-10	(-23.3)	159800	151500	143400	135300	127500	119800
	-15	(-26.1)	136800	129400	122200	115000	108000	101200
	-20	(-28.9)	115900	109300	102900	96600	90400	84400
	-25	(-31.7)	96800	91000	85300	79700	74300	69000
	-30	(-34.4)	79300	74200	69200	64300	59500	54900
	-35	(-37.2)	63200	58700	54300	50000	45900	41900
	-40	(-40)	48400	44400	40500	36800	33200	29800
KRSB400L8 Compressor Model 6FE-44	0	(-17.8)	256200	244100	232200	220400	208800	197400
	-5	(-20.6)	223200	212300	201600	191000	180600	170400
	-10	(-23.3)	193100	183400	173800	164400	155100	146000
	-15	(-26.1)	165700	157100	148500	140100	131900	123900
	-20	(-28.9)	140800	133100	125500	118100	110800	103700
	-25	(-31.7)	118000	111200	104500	97900	91500	85400
	-30	(-34.4)	97100	91100	85200	79500	73900	68500
	-35	(-37.2)	77900	72600	67500	62500	57600	52900
	-40	(-40)	60100	55500	51000	46600	42400	38400

Above ratings are based on mean temperature. To convert to dew point ratings, use 0.95 multiplier.  
 Application Data calculated at 65°F Return Gas, 6°F Liquid Subcooling  
 Shaded Area Restriction: 20°F Max Superheat

## SEMI-HERMETIC Models

MODEL	COMPRESSOR MODEL NUMBER	Power Supply	Compressor		COOLING	UNIT	
			RLA	LRA	FAN FLA**	MCA	MOP
KRSB010M8-IS2A	2KES-05-2EU-0Y	208-230/1/60	9.2	37	-	11.5	20
KRSB010M8-IT3A	2KES-05-2DU-0Y	208-230/3-60	6	32	-	7.5	15
KRSB010M8-IT4A	2KES-05-4SU-0Y	460/3/60	2.6	16	-	3.3	15
KRSB010M8-IT5A	2KES-05-5SU-0Y	575/3/60	1.9	12.8	-	2.4	15
KRSB015M8-IS2A	2JES-07-2EU-0Y	208-230/1/60	10.5	40	-	13.1	20
KRSB015M8-IT3A	2JES-07-2DU-0Y	208-230/3-60	7.4	40	-	9.3	15
KRSB015M8-IT4A	2JES-07-4SU-0Y	460/3/60	3.2	20	-	4.0	15
KRSB015M8-IT5A	2JES-07-5SU-0Y	575/3/60	2.4	16	-	3.0	15
KRSB020M8-IS2A	2HES-2-2EU-0Y	208-230/1/60	14.1	58.5	-	17.6	30
KRSB020M8-IT3A	2HES-2-2DU-0Y	208-230/3-60	12.2	54	-	15.3	25
KRSB020M8-IT4A	2HES-2-4SU-0Y	460/3/60	4.5	24	-	5.6	15
KRSB020M8-IT5A	2HES-2-5SU-0Y	575/3/60	3.6	17	-	4.5	15
KRSB025M8-IS2A	2GES-2-2EU-0Y	208-230/1/60	17.8	58.5	-	22.3	40
KRSB025M8-IT3A	2GES-2-2DU-0Y	208-230/3-60	12.1	54	-	15.1	25
KRSB025M8-IT4A	2GES-2-4SU-0Y	460/3/60	4.8	24	-	6.0	15
KRSB025M8-IT5A	2GES-2-5SU-0Y	575/3/60	3.7	17	-	4.6	15
KRSB029M8-IT3A	2FES-3-2DU-0Y	208-230/3-60	13.9	60	-	17.4	30
KRSB029M8-IT4A	2FES-3-4SU-0Y	460/3/60	5.7	27.5	-	7.1	15
KRSB029M8-IT5A	2FES-3-5SU-0Y	575/3/60	4.9	19	-	6.1	15
KRSB030M8-IS2A	2EES-3-2EU-0Y	208-230/1/60	28.8	109	-	36.0	60
KRSB030M8-IT3A	2EES-3-2DU-0Y	208-230/3-60	17.3	97	-	21.6	35
KRSB030M8-IT4A	2EES-3-4SU-0Y	460/3/60	7.3	39.5	-	9.1	15
KRSB030M8-IT5A	2EES-3-5SU-0Y	575/3/60	5.9	28.5	-	7.4	15
KRSB035M8-IS2A	2DES-3-2EU-0Y	208-230/1/60	29.6	113	-	37.0	60
KRSB035M8-IT3A	2DES-3-2DU-0Y	208-230/3-60	18.8	97	-	23.5	40
KRSB035M8-IT4A	2DES-3-4SU-0Y	460/3/60	8.1	39.5	-	10.1	15
KRSB035M8-IT5A	2DES-3-5SU-0Y	575/3/60	5.7	28.5	-	7.1	15
KRSB040M8-IT3A	2CES-4-2DU-0Y	208-230/3-60	22.4	115.5	-	28.0	50
KRSB040M8-IT4A	2CES-4-4SU-0Y	460/3/60	9.1	47.5	-	11.4	20
KRSB040M8-IT5A	2CES-4-5SU-0Y	575/3/60	7.3	34	-	9.1	15
KRSB050M8-IT3A	4FES-5-2DU-1Y	208-230/3-60	29.9	163	-	37.4	60
KRSB050M8-IT4A	4FES-5-4SU-1Y	460/3/60	14.6	66.5	-	18.3	30
KRSB050M8-IT5A	4FES-5-5SU-1Y	575/3/60	9.7	48	-	12.1	20
KRSB060M8-IT3A	4EES-6-2DU-1Y	208-230/3-60	34.6	163	-	43.3	70
KRSB060M8-IT4A	4EES-6-4SU-1Y	460/3/60	14.9	66.5	-	18.6	30
KRSB060M8-IT5A	4EES-6-5SU-1Y	575/3/60	10.5	48	-	13.1	20
KRSB076M8-IT3A	4DES-7-2DU-1Y	208-230/3-60	38.1	215	-	47.6	80
KRSB076M8-IT4A	4DES-7-4SU-1Y	460/3/60	17	88	-	21.3	35
KRSB076M8-IT5A	4DES-7-5SU-1Y	575/3/60	12.3	63.5	-	15.4	25
KRSB090M8-IT3A	4CES-9-2DU-1Y	208-230/3-60	42.1	215	-	52.6	90
KRSB090M8-IT4A	4CES-9-4SU-1Y	460/3/60	19	88	-	23.8	40
KRSB090M8-IT5A	4CES-9-5SU-1Y	575/3/60	15.2	63.5	-	19.0	30
KRSB100M8-IT3A	4VES-10-2NU-1Y	208-230/3-60	47.4	222	-	59.3	100
KRSB100M8-IT4A	4VES-10-2NU-1Y	460/3/60	21.4	111	-	26.8	45
KRSB100M8-IT5A	4VES-10-5PU-1Y	575/3/60	17.1	89	-	21.4	35
KRSB120M8-IT3A	4TES-12-2NU-1Y	208-230/3-60	52.1	252	-	65.1	110
KRSB120M8-IT4A	4TES-12-2NU-1Y	460/3/60	23.6	126	-	29.5	50
KRSB120M8-IT5A	4TES-12-5PU-1Y	575/3/60	18.9	101	-	23.6	40
KRSB150M8-IT3A	4PES-15-2NU-1Y	208-230/3-60	60	294	-	75.0	125
KRSB150M8-IT4A	4PES-15-2NU-1Y	460/3/60	27.1	147	-	33.9	60
KRSB150M8-IT5A	4PES-15-5PU-1Y	575/3/60	21.8	117	-	27.3	45
KRSB200M8-IT3A	4NES-20-2NU-1Y	208-230/3-60	71.1	352	-	88.9	150
KRSB200M8-IT4A	4NES-20-2NU-1Y	460/3/60	32.1	176	-	40.1	70
KRSB200M8-IT5A	4NES-20-5PU-1Y	575/3/60	26.3	140	-	32.9	50
KRSB250M8-IT3A	4HE-25-2NU-1Y	208-230/3-60	93.2	436	-	116.5	200
KRSB250M8-IT4A	4HE-25-2NU-1Y	460/3/60	42.1	218	-	52.6	90
KRSB250M8-IT5A	4HE-25-5PU-1Y	575/3/60	33.6	174	-	42.0	70
KRSB300M8-IT3A	4GE-30-2NU-1Y	208-230/3-60	110.6	490	-	138.3	225
KRSB300M8-IT4A	4GE-30-2NU-1Y	460/3/60	50	245	-	62.5	110
KRSB300M8-IT5A	6HE-35-5PU-1Y	575/3/60	40	196	-	50.0	90
KRSB350M8-IT3A	6HE-35-2NU-2Y	208-230/3-60	129.5	550	-	161.9	250
KRSB350M8-IT4A	6HE-35-2NU-2Y	460/3/60	58.6	275	-	73.3	125
KRSB350M8-IT5A	6HE-35-5PU-2Y	575/3/60	46.4	220	-	58.0	100
KRSB400M8-IT3A	6GE-40-2NU-2Y	208-230/3-60	173.8	700	-	217.3	350
KRSB400M8-IT4A	6GE-40-2NU-2Y	460/3/60	78.6	350	-	98.3	175
KRSB400M8-IT5A	6GE-40-5PU-2Y	575/3/60	62.9	280	-	78.6	125

Above listed RLA value is based on UL rating method and may differ from published compressor RLA data.

## SEMI-HERMETIC Models (cont'd)

MODEL	COMPRESSOR MODEL NUMBER	Power Supply	Compressor		COOLING	UNIT	
			RLA	LRA	FAN FLA**	MCA	MOP
KRSB010L*-IS2A	2HES-1-2EU-0Y	208-230/1/60	12.9	56.5	0.85	17.0	25
KRSB010L*-IT3A	2HES-1-2DU-0Y	208-230/3-60	8.1	42	0.85	11.0	15
KRSB010L*-IT4A	2HES-1-4SU-0Y	460/3/60	3.4	19	0.44	4.7	15
KRSB010L*-IT5A	2HES-1-5SU-0Y	575/3/60	2.6	13	0.85	3.6	15
KRSB015L*-IS2A	2FES-2-2EU-0Y	208-230/1/60	14.6	60	0.85	19.1	30
KRSB015L*-IT3A	2FES-2-2DU-0Y	208-230/3-60	11.1	54	0.85	14.7	25
KRSB015L*-IT4A	2FES-2-4SU-0Y	460/3/60	4.6	24	0.44	6.2	15
KRSB015L*-IT5A	2FES-2-5SU-0Y	575/3/60	3.6	17	0.85	4.8	15
KRSB020L*-IT3A	2EES-2-2DU-0Y	208-230/3-60	13.3	70	0.85	17.5	30
KRSB020L*-IT4A	2EES-2-4SU-0Y	460/3/60	5.4	28.5	0.44	7.2	15
KRSB020L*-IT5A	2EES-2-5SU-0Y	575/3/60	4	20.5	0.85	5.3	15
KRSB025L*-IT3A	2DES-2-2DU-0Y	208-230/3-60	14.5	80.5	0.85	19.0	30
KRSB025L*-IT4A	2DES-2-4SU-0Y	460/3/60	6.4	33	0.44	8.4	15
KRSB025L*-IT5A	2DES-2-5SU-0Y	575/3/60	4.7	23.5	0.85	6.2	15
KRSB030L*-IT3A	2CES-3-2DU-0Y	208-230/3-60	16.5	97	0.85	21.5	35
KRSB030L*-IT4A	2CES-3-4SU-0Y	460/3/60	7	39.5	0.44	9.2	15
KRSB030L*-IT5A	2CES-3-5SU-0Y	575/3/60	5.6	28.5	0.85	7.3	15
KRSB031L*-IT3A	4FES-3-2DU-0Y	208-230/3-60	22.2	115.5	0.85	28.6	50
KRSB031L*-IT4A	4FES-3-4SU-0Y	460/3/60	9	47.5	0.44	11.7	20
KRSB031L*-IT5A	4FES-3-5SU-0Y	575/3/60	6.9	34	0.85	9.0	15
KRSB039L*-IT3A	4EES-4-2DU-0Y	208-230/3-60	24.8	142	0.85	31.9	50
KRSB039L*-IT4A	4EES-4-4SU-0Y	460/3/60	10.3	58	0.44	13.3	20
KRSB039L*-IT5A	4EES-4-5SU-0Y	575/3/60	8.3	41.5	0.85	10.7	15
KRSB050L*-IT3A	4DES-5-2DU-0Y	208-230/3-60	25.4	163	0.85	32.6	50
KRSB050L*-IT4A	4DES-5-4SU-0Y	460/3/60	12	66.5	0.44	15.4	25
KRSB050L*-IT5A	4DES-5-5SU-0Y	575/3/60	10	48	0.85	12.8	20
KRSB060L*-IT3A	4CES-6-2DU-0Y	208-230/3-60	30.8	215	0.85	39.4	70
KRSB060L*-IT4A	4CES-6-4SU-0Y	460/3/60	15.8	88	0.44	20.2	35
KRSB060L*-IT5A	4CES-6-5SU-0Y	575/3/60	12.5	63.5	0.85	16.0	25
KRSB080L*-IT3A	4TES-9-2NU-1Y	208-230/3-60	34.8	180	0.85	44.4	70
KRSB080L*-IT4A	4TES-9-2NU-1Y	460/3/60	15.7	90	0.44	20.1	35
KRSB080L*-IT5A	4TES-9-5PU-1Y	575/3/60	13.6	72	0.85	17.3	30
KRSB100L*-IT3A	4PES-12-2NU-1Y	208-230/3-60	42.7	222	0.85	54.2	90
KRSB100L*-IT4A	4PES-12-2NU-1Y	460/3/60	19.3	111	0.44	24.6	40
KRSB100L*-IT5A	4PES-12-5PU-1Y	575/3/60	16	89	0.85	20.3	35
KRSB120L*-IT3A	4NES-14-2NU-1Y	208-230/3-60	49	252	0.85	62.1	110
KRSB120L*-IT4A	4NES-14-2NU-1Y	460/3/60	22.1	126	0.44	28.1	50
KRSB120L*-IT5A	4NES-14-5PU-1Y	575/3/60	17.7	101	0.85	22.5	40
KRSB130L*-IT3A	4JE-15-2NU-1Y	208-230/3-60	61.6	352	0.85	77.9	125
KRSB130L*-IT4A	4JE-15-2NU-1Y	460/3/60	27.9	176	0.44	35.3	60
KRSB130L*-IT5A	4JE-15-5PU-1Y	575/3/60	22.3	140	0.85	28.2	50
KRSB150L*-IT3A	4HE-18-2NU-1Y	208-230/3-60	66.7	352	0.85	84.2	150
KRSB150L*-IT4A	4HE-18-2NU-1Y	460/3/60	30.1	176	0.44	38.1	60
KRSB150L*-IT5A	4HE-18-5PU-1Y	575/3/60	24.1	140	0.85	30.5	50
KRSB200L*-IT3A	4GE-23-2NU-1Y	208-230/3-60	71.1	352	0.85	89.7	150
KRSB200L*-IT4A	4GE-23-2NU-1Y	460/3/60	32.1	176	0.44	40.6	70
KRSB200L*-IT5A	4GE-23-5PU-1Y	575/3/60	25.7	140	0.85	32.5	50
KRSB250L*-IT3A	6HE-28-2NU-2Y	208-230/3-60	95.6	490	0.85	120.4	200
KRSB250L*-IT4A	6HE-28-2NU-2Y	460/3/60	43.2	245	0.44	54.4	90
KRSB250L*-IT5A	6HE-28-5PU-2Y	575/3/60	34.6	196	0.85	43.6	70
KRSB300L*-IT3A	6GE-34-2NU-2Y	208-230/3-60	104.3	490	0.85	131.2	225
KRSB300L*-IT4A	6GE-34-2NU-2Y	460/3/60	47.1	245	0.44	59.3	100
KRSB300L*-IT5A	6GE-34-5PU-2Y	575/3/60	37.1	196	0.85	46.7	80
KRSB400L*-IT3A	6FE-44-2NU-2Y	208-230/3-60	120.1	700	0.85	151.0	250
KRSB400L*-IT4A	6FE-44-2NU-2Y	460/3/60	54.3	350	0.44	68.3	110
KRSB400L*-IT5A	6FE-44-5PU-2Y	575/3/60	43.6	280	0.85	54.8	90

\* = "6" or "8" models.

\*\* L6 MODELS ONLY

Above listed RLA value is based on UL rating method and may differ from published compressor RLA data.

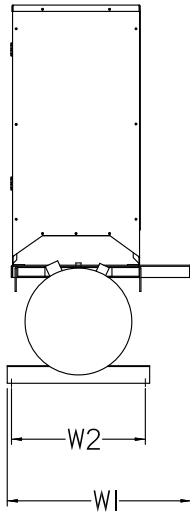
**DIMENSIONAL DATA - SEMI-HERMETIC MODELS**

**KRS - COMPRESSOR UNITS**

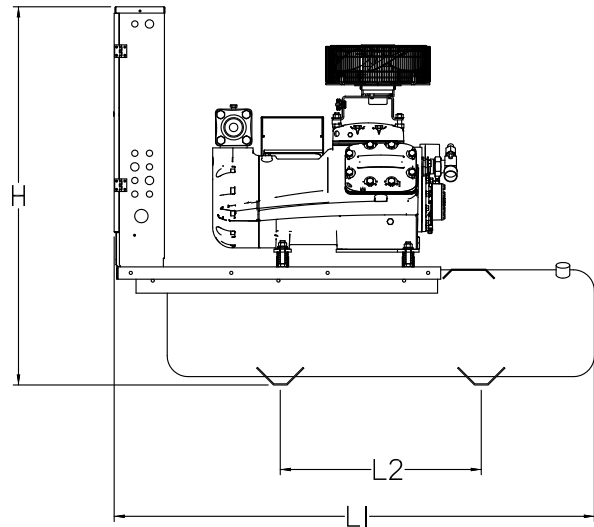
MODEL	STANDARD UNIT										UNIT WITH SIDE BASE									
	OVERALL						MTG. CENTERS				OVERALL						MTG. CENTERS			
	L1		W1		H		L2		W2		L1		W1		H		L2		W2	
	ln.	mm	ln.	mm	ln.	mm	ln.	mm	ln.	mm	ln.	mm	ln.	mm	ln.	mm	ln.	mm	ln.	mm
KRSB010M8	30	762	28	711	33	838	12	305	13	330										
KRSB015M8	30	762	28	699	33	838	12	305	13	330										
KRSB020M8	30	762	28	711	33	838	12	305	13	330										
KRSB025M8	40	1016	22	559	33	838	12	305	13	330										
KRSB029M8	40	1016	22	559	33	838	12	305	13	330										
KRSB030M8	40	1016	22	559	34	864	12	305	13	330										
KRSB035M8	40	1016	22	559	34	864	12	305	13	330										
KRSB040M8	42	1067	29	737	40	1016	12	305	13	330										
KRSB050M8	42	1067	29	737	40	1016	12	305	13	330										
KRSB060M8	44	1118	29	737	43	1092	15	381	13	330										
KRSB076M8	44	1118	29	737	43	1092	15	381	13	330										
KRSB090M8	44	1118	29	737	43	1092	15	381	13	330										
KRSB100M8	49	1245	29	737	43	1092	24	610	16	394										
KRSB120M8	49	1245	29	737	43	1092	24	610	16	394										
KRSB150M8	49	1245	29	737	45	1143	24	610	16	394										
KRSB200M8	49	1245	28	711	45	1143	24	610	16	394	49	1245	34	864	47	1194	29	724	31	775
KRSB250M8	49	1245	28	711	45	1143	24	610	16	394	49	1245	34	864	47	1194	29	724	31	775
KRSB300M8	65	1651	28	711	45	1143	24	610	16	394	49	1245	34	864	47	1194	29	724	31	775
KRSB350M8	65	1651	28	711	45	1143	24	610	16	394	65	1651	34	864	47	1194	29	724	31	775
KRSB400M8	65	1651	28	711	45	1143	24	610	16	394	65	1651	34	864	47	1194	29	724	31	775
KRSB010L6 /L8	30	762	28	711	33	838	12	305	13	330										
KRSB015L6 /L8	30	762	28	711	33	838	12	305	13	330										
KRSB020L6 /L8	30	762	28	711	33	838	12	305	13	330										
KRSB025L6 /L8	34	864	22	559	34	864	12	305	13	330										
KRSB030L6 /L8	43	1092	28	711	40	1016	12	305	13	330										
KRSB031L6 /L8	43	1092	28	711	40	1016	12	305	13	330										
KRSB039L6 /L8	44	1118	28	711	43	1092	15	381	13	330										
KRSB050L6 /L8	44	1118	28	711	43	1092	15	381	13	330										
KRSB060L6 /L8	44	1118	28	711	43	1092	15	381	13	330										
KRSB080L6 /L8	49	1245	28	711	43	1092	24	610	16	394										
KRSB100L6 /L8	49	1245	28	711	45	1143	24	610	16	394										
KRSB120L6 /L8	49	1245	28	711	43	1092	24	610	16	394	49	1245	34	864	45	1143	29	724	31	775
KRSB130L6 /L8	49	1245	28	711	43	1092	24	610	16	394	49	1245	34	864	45	1143	29	724	31	775
KRSB150L6 /L8	49	1245	28	711	43	1092	24	610	16	394	49	1245	34	864	45	1143	29	724	31	775
KRSB200L6 /L8	49	1245	28	711	45	1143	24	610	16	394	49	1245	34	864	47	1194	29	724	31	775
KRSB250L6 /L8	49	1245	28	711	45	1143	24	610	16	394	49	1245	34	864	47	1194	29	724	31	775
KRSB300L6 /L8	58	1473	28	711	45	1143	24	610	16	394	58	1473	34	864	47	1194	29	724	31	775
KRSB400L6 /L8	58	1473	28	711	45	1143	24	610	16	394	58	1473	34	864	47	1194	29	724	31	775

\* when oil separator, suction accumulator and replaceable suction filter are ordered together, use dimensions with side base.

STANDARD UNIT

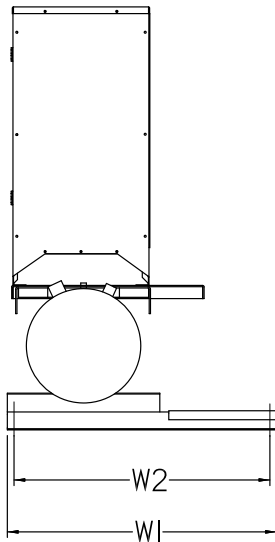


FRONT VIEW

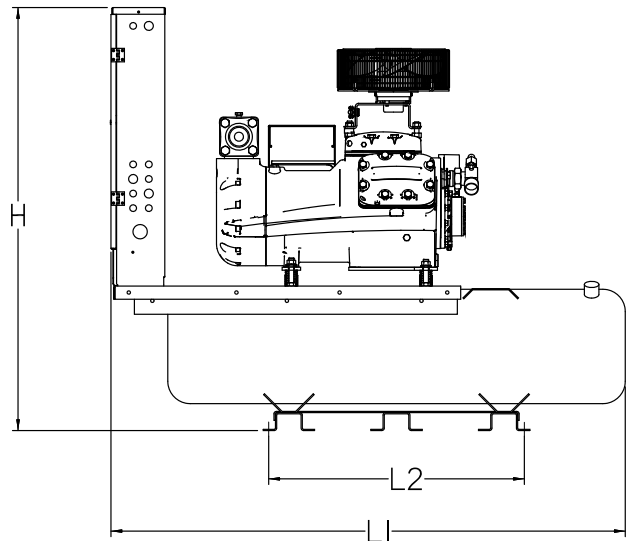


SIDE VIEW

UNIT with SIDE BASE \*



FRONT VIEW



SIDE VIEW

MODEL	COMPRESSOR				RECEIVER				RECEIVER CAPACITY 90 % FULL *		APPROX. SHIPPING WEIGHT	
	DISCHARGE (OD)		SUCTION(OD)		INLET		OUTLET		Lbs.	Kgs	Lbs.	Kgs
	In.	mm	In.	mm	In.	mm	In.	mm				
KRSB010M8	1/2	13	5/8	16	1/2	13	3/8	10	23	11	290	132
KRSB015M8	5/8	16	7/8	22	1/2	13	3/8	10	23	11	290	132
KRSB020M8	5/8	16	7/8	22	1/2	13	3/8	10	23	11	295	134
KRSB025M8	5/8	16	7/8	22	1/2	13	3/8	10	23	11	370	168
KRSB029M8	5/8	16	1 1/8	29	1/2	13	3/8	10	23	11	380	172
KRSB030M8	5/8	16	1 1/8	29	1/2	13	3/8	10	40	18	385	175
KRSB035M8	5/8	16	1 1/8	29	1/2	13	3/8	10	40	18	385	175
KRSB040M8	7/8	22	1 3/8	35	5/8	16	5/8	16	50	23	440	200
KRSB050M8	7/8	22	1 3/8	35	5/8	16	5/8	16	50	23	445	202
KRSB060M8	7/8	22	1 3/8	35	5/8	16	5/8	16	81	37	530	240
KRSB076M8	7/8	22	1 3/8	35	5/8	16	5/8	16	81	37	605	274
KRSB090M8	1 1/8	29	1 3/8	35	5/8	16	5/8	16	81	37	535	243
KRSB100M8	1 1/8	29	1 3/8	35	7/8	22	7/8	22	112	51	630	286
KRSB120M8	1 1/8	29	1 3/8	35	7/8	22	7/8	22	149	68	635	288
KRSB150M8	1 1/8	29	1 5/8	41	7/8	22	7/8	22	149	68	650	295
KRSB200M8	1 1/8	29	1 5/8	41	7/8	22	7/8	22	149	68	620	281
KRSB250M8	1 3/8	35	2 1/8	54	1 1/8	29	1 1/8	29	149	68	810	367
KRSB300M8	1 3/8	35	2 1/8	54	1 1/8	29	1 1/8	29	187	85	840	381
KRSB350M8	1 5/8	41	2 1/8	54	1 1/8	29	1 1/8	29	187	85	890	404
KRSB400M8	1 5/8	41	2 1/8	54	1 1/8	29	1 1/8	29	187	85	935	424
KRSB010L6 /L8	1/2	13	5/8	15	1/2	13	3/8	10	23	11	295	134
KRSB015L6 /L8	1/2	13	7/8	22	1/2	13	3/8	10	23	11	300	136
KRSB020L6 /L8	1/2	13	7/8	22	1/2	13	3/8	10	23	11	365	166
KRSB025L6 /L8	5/8	16	1 1/8	29	1/2	13	3/8	10	40	18	425	193
KRSB030L6 /L8	7/8	22	1 3/8	35	1/2	13	1/2	13	50	23	450	204
KRSB031L6 /L8	7/8	22	1 3/8	35	1/2	13	1/2	13	50	23	465	211
KRSB039L6 /L8	7/8	22	1 3/8	35	5/8	16	5/8	16	81	37	545	247
KRSB050L6 /L8	1 1/8	29	1 3/8	35	5/8	16	5/8	16	81	37	550	249
KRSB060L6 /L8	1 1/8	29	1 3/8	35	5/8	16	5/8	16	81	37	560	254
KRSB080L6 /L8	1 1/8	29	1 3/8	35	7/8	22	7/8	22	112	51	625	283
KRSB100L6 /L8	1 1/8	29	1 3/8	35	7/8	22	7/8	22	112	51	650	295
KRSB120L6 /L8	1 1/8	29	1 5/8	41	7/8	22	7/8	22	112	51	675	306
KRSB130L6 /L8	1 1/8	29	1 5/8	41	7/8	22	7/8	22	112	51	730	331
KRSB150L6 /L8	1 3/8	35	1 5/8	41	7/8	22	7/8	22	112	51	735	333
KRSB200L6 /L8	1 3/8	35	2 1/8	54	1 1/8	29	1 1/8	29	149	68	805	365
KRSB250L6 /L8	1 3/8	35	2 1/8	54	1 1/8	29	1 1/8	29	149	68	855	388
KRSB300L6 /L8	1 3/8	35	2 1/8	54	1 1/8	29	1 1/8	29	187	85	905	411
KRSB400L6 /L8	1 5/8	41	2 1/8	54	1 1/8	29	1 1/8	29	187	85	930	422

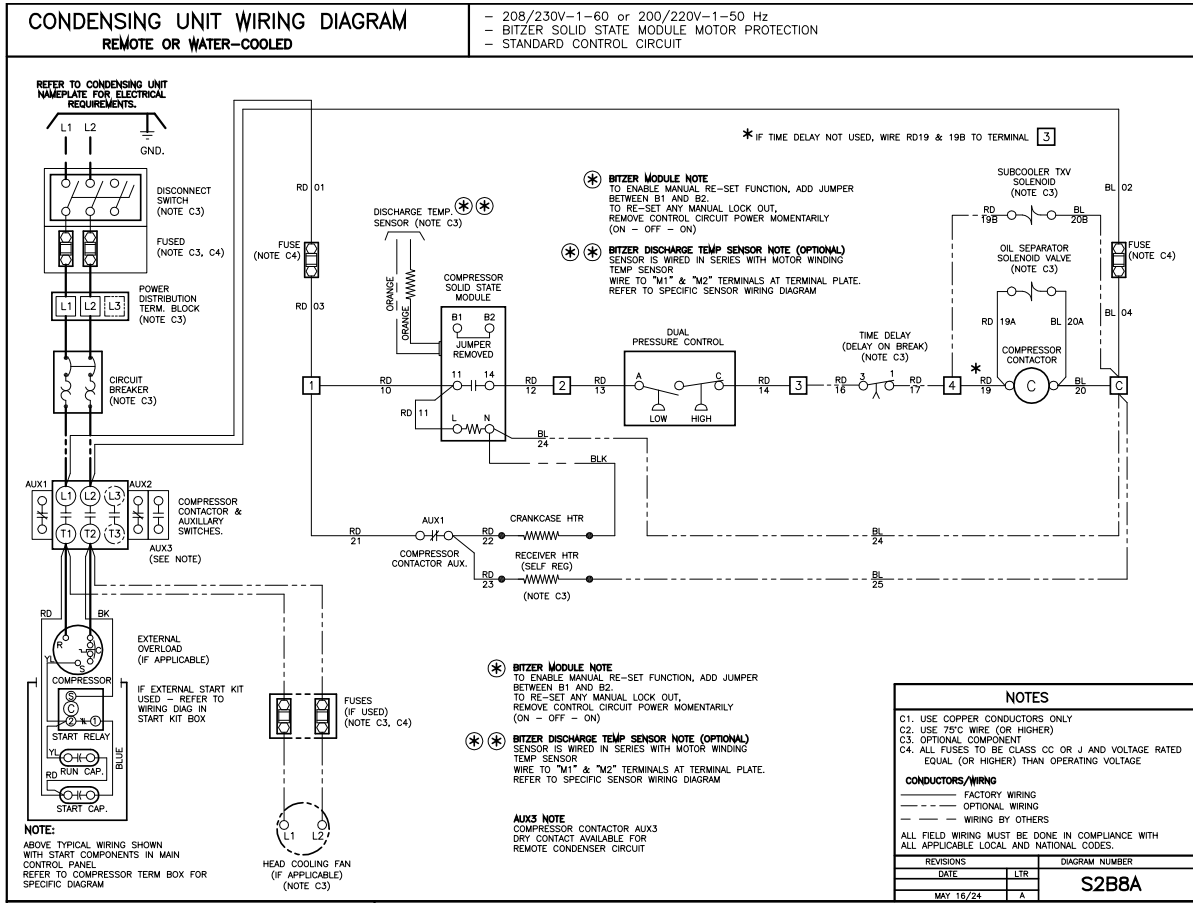
**\* NOTE ON ALTERNATE REFRIGERANTS:**

\* PUBLISHED RECEIVER CAPACITY IS BASED ON **R404A** ON MODELS USING "8" AS REFRIGERANT CODE.

FOR ALTERNATE REFRIGERANTS, MULTIPLY **R404A** VALUE BY THE APPROPRIATE VALUE BELOW:

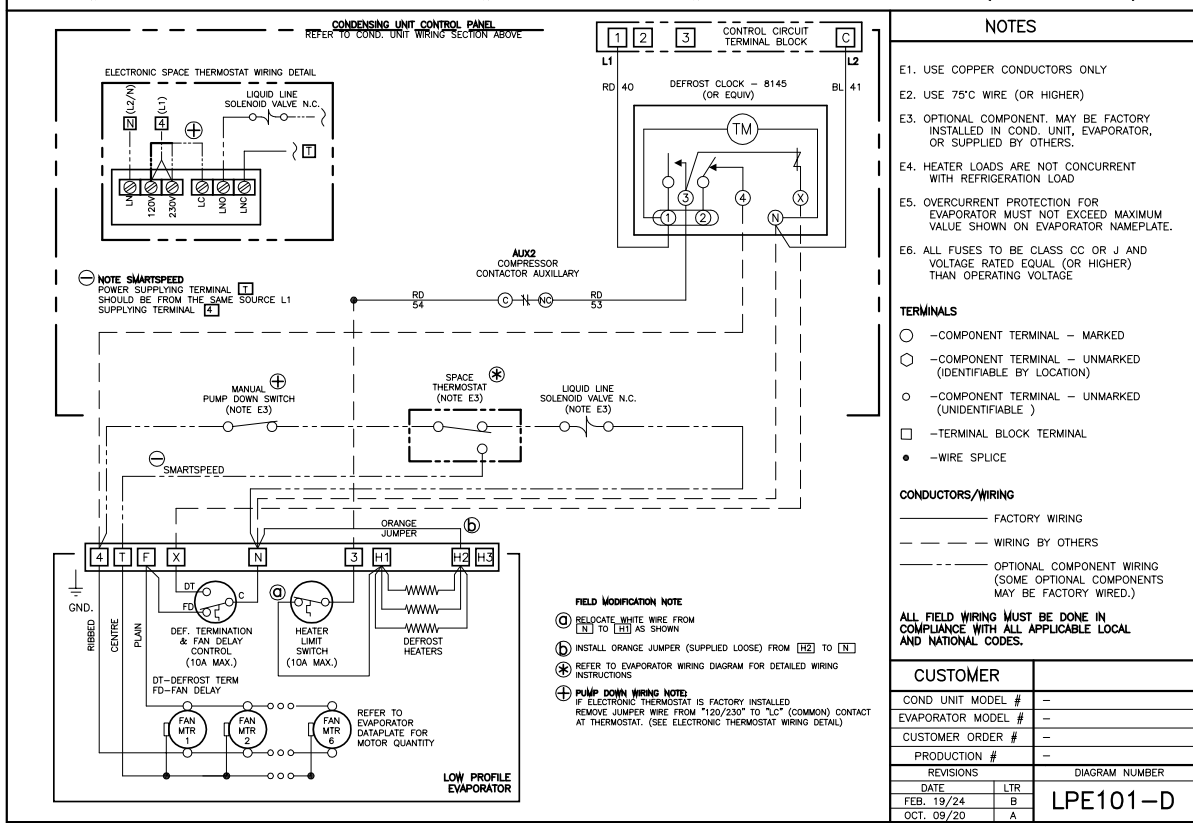
<b>R407A</b>	<b>R407C</b>	<b>R448A</b>	<b>R449A</b>	<b>R507</b>	<b>R22</b>
1.10	1.10	1.06	1.06	1.00	1.15

208-230/1/60 Unit with Low Profile Electric Defrost Evaporator

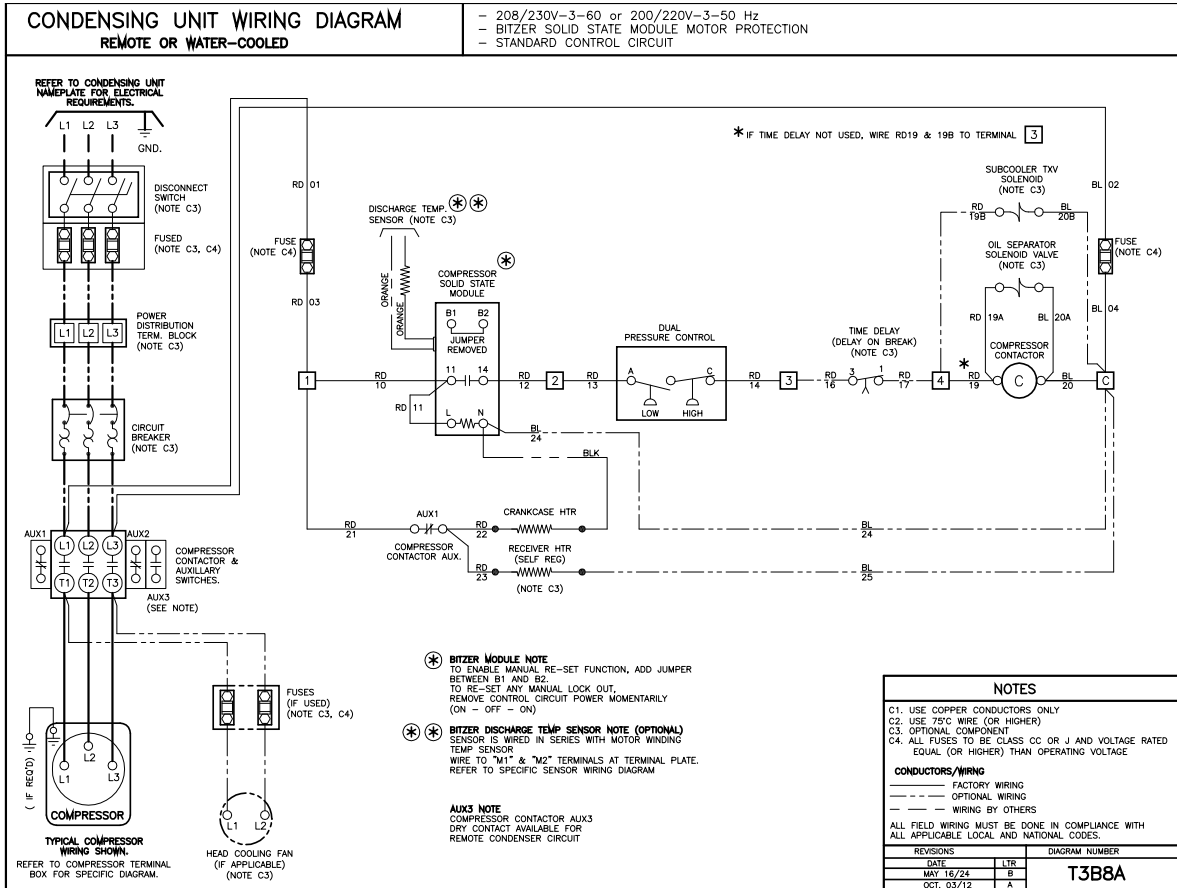


TYPICAL EVAPORATOR WIRING: FOR ONE, SINGLE PHASE LOW PROFILE ELECTRIC DEFROST EVAPORATOR - SINGLE POINT

FOR USE WITH: SINGLE OR THREE PHASE CONDENSING UNITS WITH DEFROST TIME CLOCK WITHOUT DEFROST HEATER CONTACTOR (MAX. 10A HEATERS)

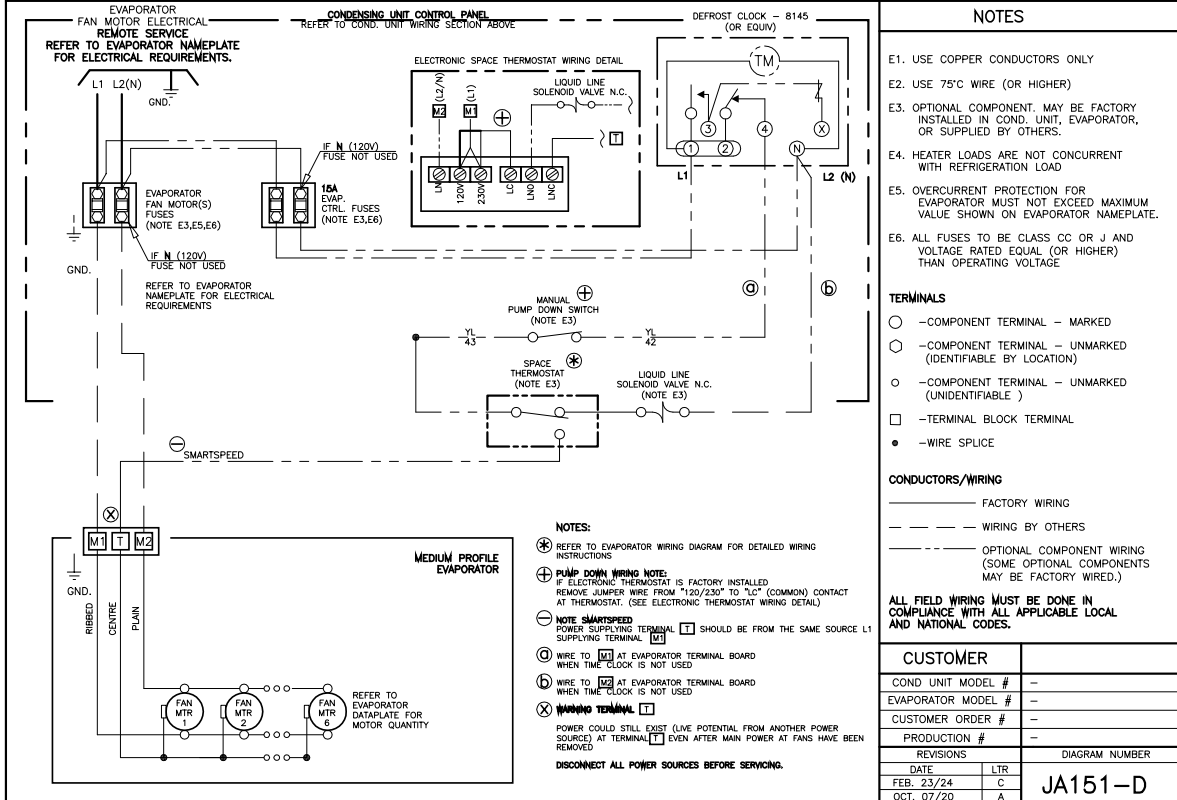


208-230/3/60 Unit with Medium Profile Air Defrost Evaporator



**TYPICAL EVAPORATOR WIRING: FOR SINGLE MEDIUM PROFILE AIR DEFROST EVAPORATOR - REMOTE POWER**

FOR USE WITH: SINGLE OR THREE PHASE CONDENSING UNITS WITH / WITHOUT DEFROST TIME CLOCK





**PROJECT INFORMATION****KRS - COMPRESSOR UNITS**

System	
Model Number	Date of Start-Up
Serial Number	Service Contractor
Refrigerant	Phone
Electrical Supply	E-mail

**NOTES:**

 <b>PRODUCT SUPPORT</b>	<p><i>web:</i> <a href="http://www.k-rp.com/kr">www.k-rp.com/kr</a>  <i>email:</i> <a href="mailto:rcu-wccu@k-rp.com">rcu-wccu@k-rp.com</a>  <i>call:</i> 1-844-893-3222 x523</p>
 <b>TROUBLESHOOTING</b>	<p><i>email:</i> <a href="mailto:troubleshooting@k-rp.com">troubleshooting@k-rp.com</a>  <i>call:</i> 1-844-893-3222 x529</p>
 <b>SERVICE PARTS</b>	<p><i>web:</i> <a href="http://www.k-rp.com/parts">www.k-rp.com/parts</a>  <i>email:</i> <a href="mailto:parts@k-rp.com">parts@k-rp.com</a>  <i>call:</i> 1-844-893-3222 x504</p>
 <b>WARRANTY</b>	<p><i>web:</i> <a href="http://www.k-rp.com/warranty">www.k-rp.com/warranty</a>  <i>email:</i> <a href="mailto:warranty@k-rp.com">warranty@k-rp.com</a>  <i>call:</i> 1-844-893-3222 x507</p>
 <b>ORDERS</b>	<p><i>email:</i> <a href="mailto:orders@k-rp.com">orders@k-rp.com</a>  <i>call:</i> 1-844-893-3222 x501</p>
 <b>SHIPPING</b>	<p><i>email:</i> <a href="mailto:shipping@k-rp.com">shipping@k-rp.com</a>  <i>call:</i> 1-844-893-3222 x503</p>



KeepRite Refrigeration  
 Brantford, ON • Longview, TX  
 1-800-463-9517 [info@k-rp.com](mailto:info@k-rp.com) [www.k-rp.com](http://www.k-rp.com)

